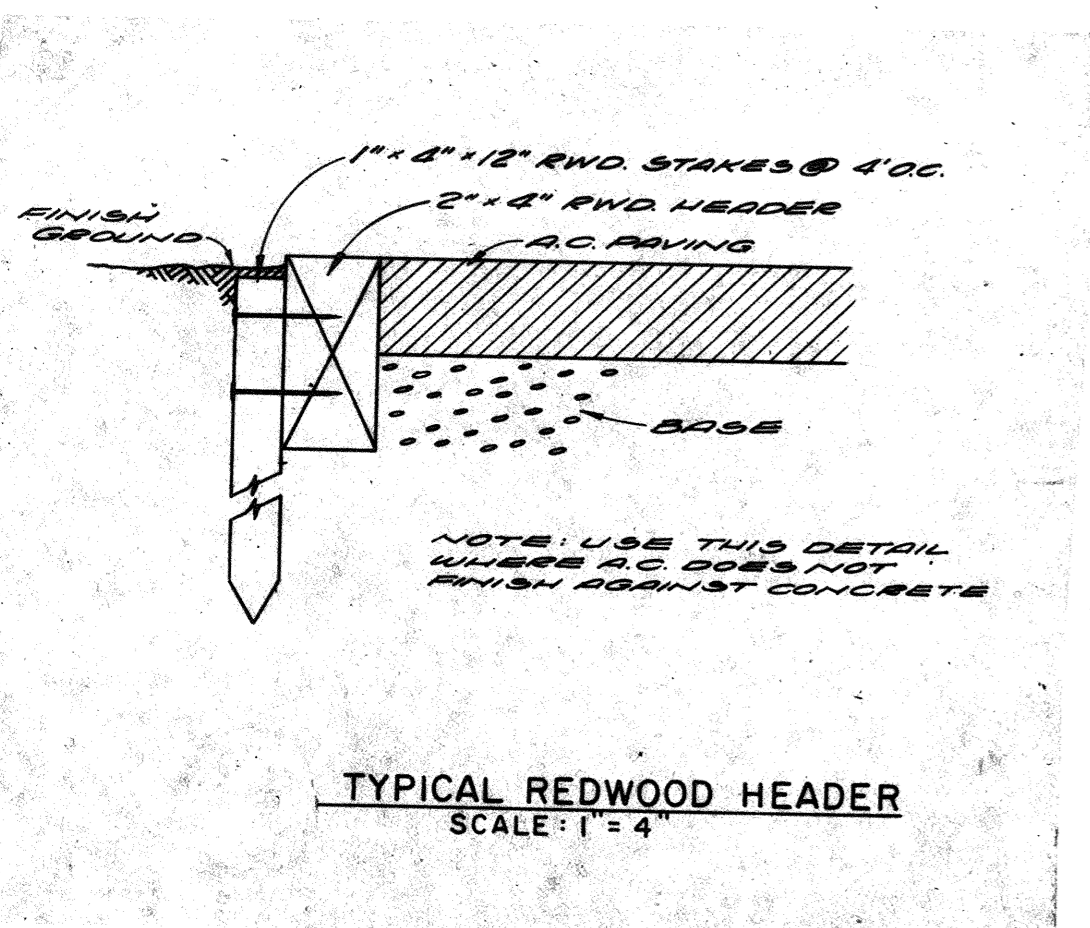
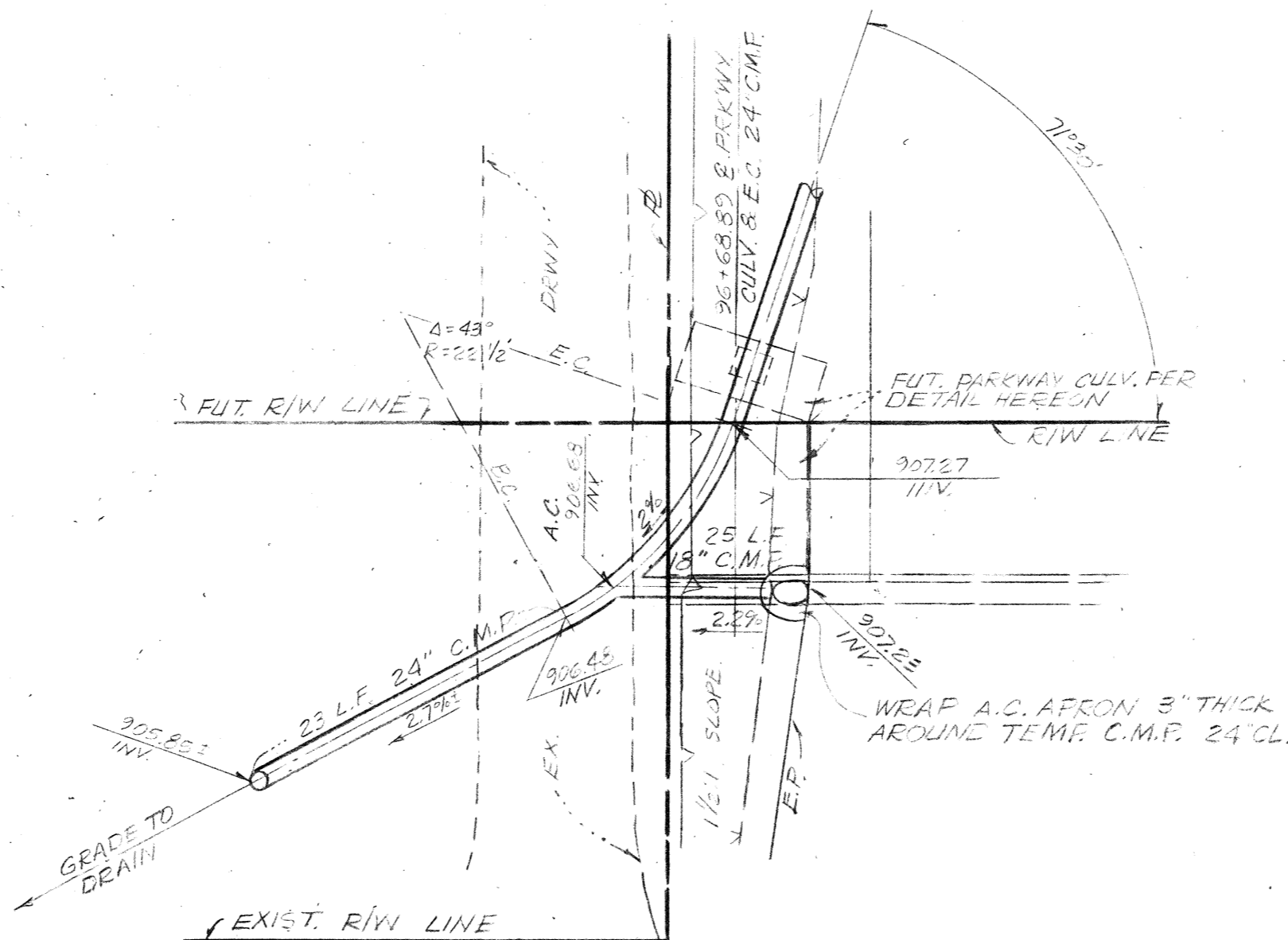


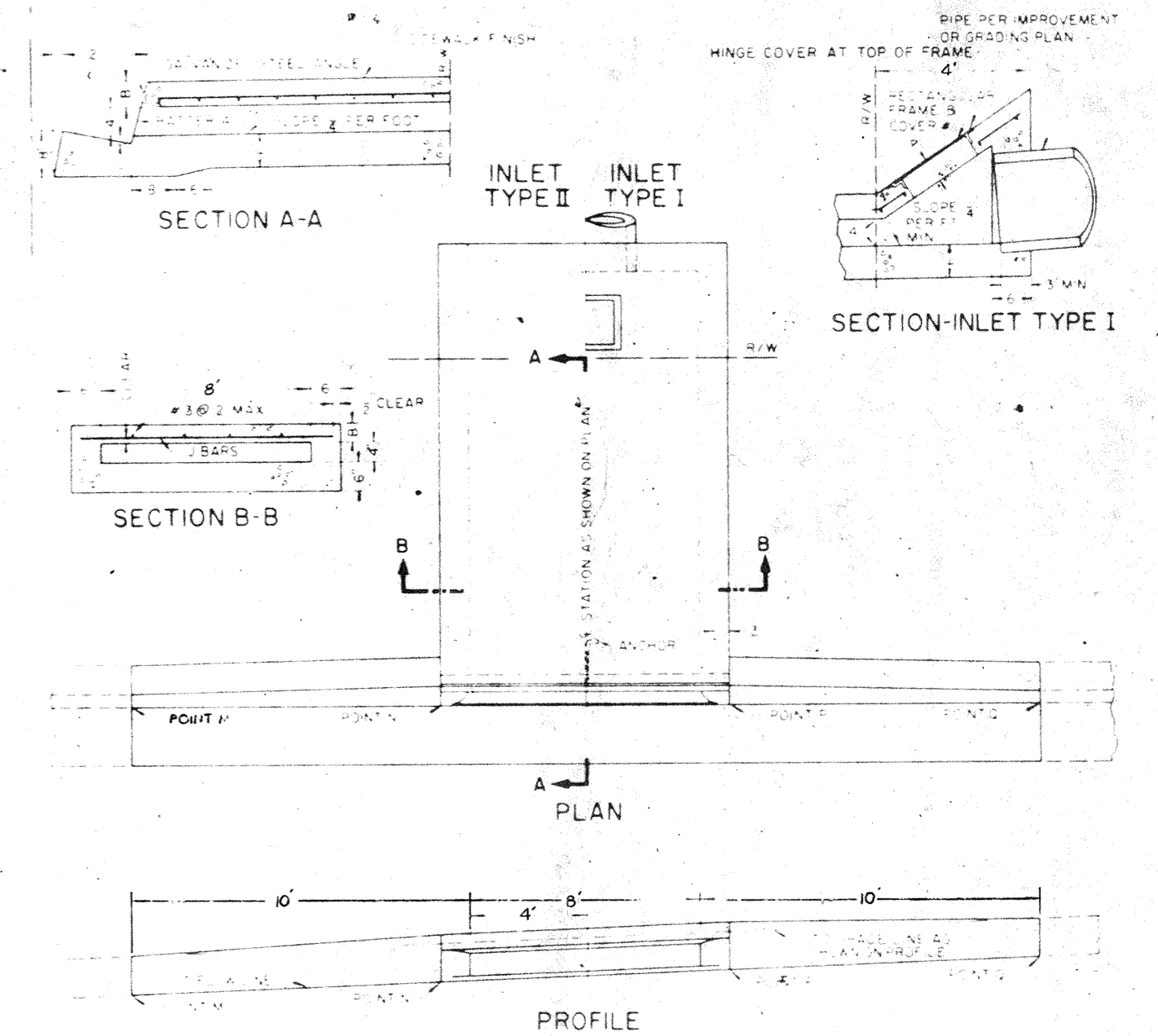
TYPICAL STREET SECTION
NO SCALE



TYPICAL REDWOOD HEADER
SCALE: 1"=4'



TEMPORARY DRAIN PIPE DETAIL
SCALE: 1"=10'



NOTES

1. ALL INLETS SHALL BE TYPE I OR TYPE II.
2. ALL INLETS SHALL BE INSTALLED AT THE POINT WHERE THE NEW INLET TYPE I BEGINS AT THE EXISTING CURB OR SIDEWALK.
3. ALL INLETS SHALL BE INSTALLED AT THE POINT WHERE THE EXISTING CURB OR SIDEWALK ENDS AT THE POINT WHERE THE NEW INLET TYPE I BEGINS AT THE EXISTING CURB OR SIDEWALK.
4. ALL INLETS SHALL BE INSTALLED AT THE POINT WHERE THE EXISTING CURB OR SIDEWALK ENDS AT THE POINT WHERE THE NEW INLET TYPE I BEGINS AT THE EXISTING CURB OR SIDEWALK.
5. ALL INLETS SHALL BE INSTALLED AT THE POINT WHERE THE EXISTING CURB OR SIDEWALK ENDS AT THE POINT WHERE THE NEW INLET TYPE I BEGINS AT THE EXISTING CURB OR SIDEWALK.
6. ALL INLETS SHALL BE INSTALLED AT THE POINT WHERE THE EXISTING CURB OR SIDEWALK ENDS AT THE POINT WHERE THE NEW INLET TYPE I BEGINS AT THE EXISTING CURB OR SIDEWALK.
7. ALL INLETS SHALL BE INSTALLED AT THE POINT WHERE THE EXISTING CURB OR SIDEWALK ENDS AT THE POINT WHERE THE NEW INLET TYPE I BEGINS AT THE EXISTING CURB OR SIDEWALK.
8. ALL INLETS SHALL BE INSTALLED AT THE POINT WHERE THE EXISTING CURB OR SIDEWALK ENDS AT THE POINT WHERE THE NEW INLET TYPE I BEGINS AT THE EXISTING CURB OR SIDEWALK.
9. ALL INLETS SHALL BE INSTALLED AT THE POINT WHERE THE EXISTING CURB OR SIDEWALK ENDS AT THE POINT WHERE THE NEW INLET TYPE I BEGINS AT THE EXISTING CURB OR SIDEWALK.
10. ALL INLETS SHALL BE INSTALLED AT THE POINT WHERE THE EXISTING CURB OR SIDEWALK ENDS AT THE POINT WHERE THE NEW INLET TYPE I BEGINS AT THE EXISTING CURB OR SIDEWALK.

STEEL SET		ANCHOR		COVER	
SIZE	LENGTH	SIZE	LENGTH	SIZE	LENGTH
1/2"	12"	1/2"	12"	1/2"	12"
3/4"	12"	3/4"	12"	3/4"	12"
1"	12"	1"	12"	1"	12"
1 1/4"	12"	1 1/4"	12"	1 1/4"	12"
1 1/2"	12"	1 1/2"	12"	1 1/2"	12"
2"	12"	2"	12"	2"	12"
2 1/2"	12"	2 1/2"	12"	2 1/2"	12"
3"	12"	3"	12"	3"	12"
3 1/2"	12"	3 1/2"	12"	3 1/2"	12"
4"	12"	4"	12"	4"	12"
4 1/2"	12"	4 1/2"	12"	4 1/2"	12"
5"	12"	5"	12"	5"	12"
5 1/2"	12"	5 1/2"	12"	5 1/2"	12"
6"	12"	6"	12"	6"	12"
6 1/2"	12"	6 1/2"	12"	6 1/2"	12"
7"	12"	7"	12"	7"	12"
7 1/2"	12"	7 1/2"	12"	7 1/2"	12"
8"	12"	8"	12"	8"	12"
8 1/2"	12"	8 1/2"	12"	8 1/2"	12"
9"	12"	9"	12"	9"	12"
9 1/2"	12"	9 1/2"	12"	9 1/2"	12"
10"	12"	10"	12"	10"	12"

PARKWAY DRAIN

REV	SYMBOL	DESCRIPTION OF CHANGE	R.C.E.	DATE	TYR CHNG	P.D.E.	DATE

DATE _____
 DESIGNED _____
 DATE _____
 DELINEATED _____
 DATE _____
 CHECKED _____

PREPARED BY:
HALE, HAALAND & ASSOC., INC.
 100 EAST THOUSAND OAKS BOULEVARD
 THOUSAND OAKS PLAZA, SUITE 220
 THOUSAND OAKS, CALIFORNIA 91360

REGISTERED CIVIL ENGINEER NUMBER 16089
 DATE: _____
 F. NO. _____ D. NO. _____ S. NO. _____ P. NO. _____ W.O. NO. 75-40

APPROVED BY CITY OF THOUSAND OAKS

PROJECT DEVELOPMENT ENGINEER _____ DATE _____
 DEPUTY DIRECTOR OF PUBLIC WORKS _____ DATE _____

STREET IMPROVEMENTS

DETAIL SHEET

CITY OF THOUSAND OAKS PROJECT NO. SUP 73-235 SHEET 3 OF 3

No. 75-21
 OCT. 24 / 75
C-5