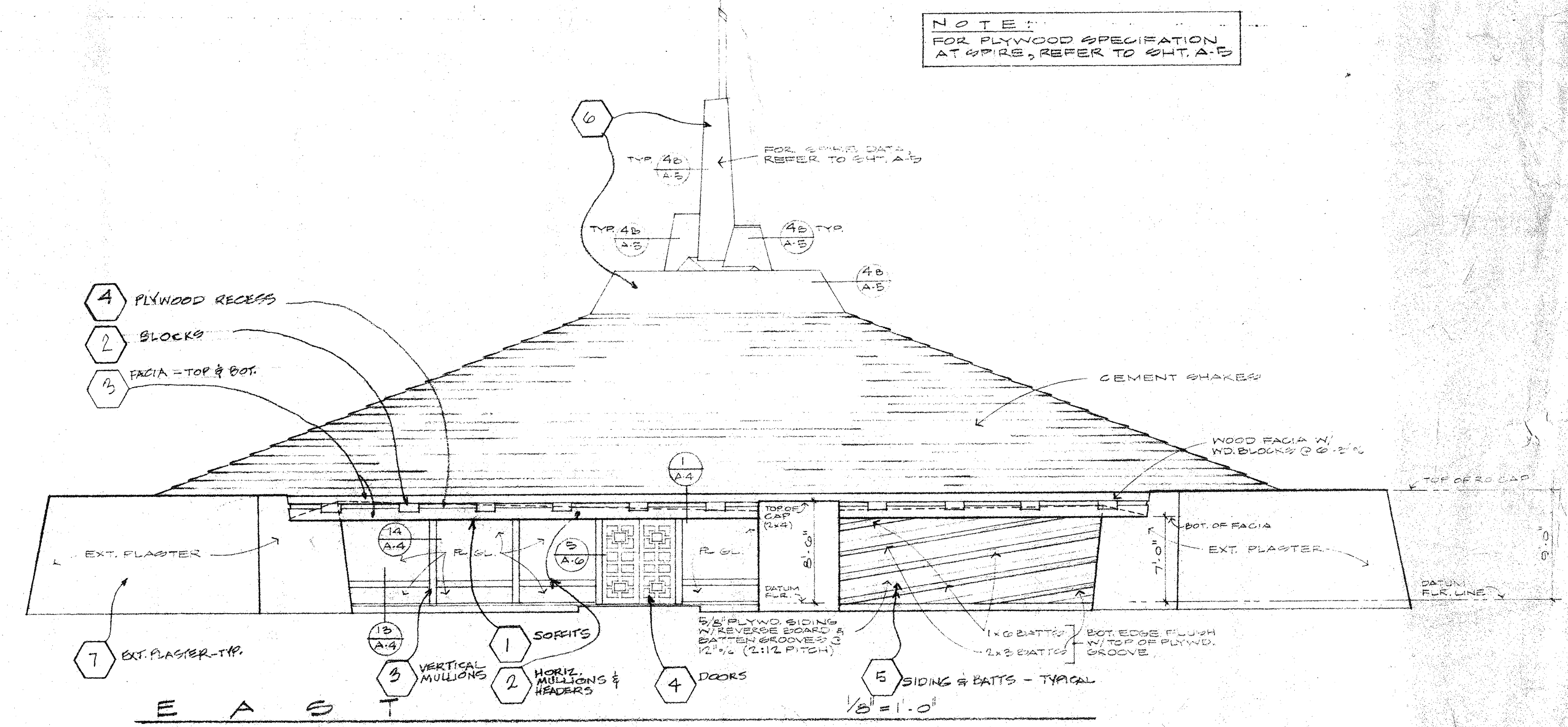
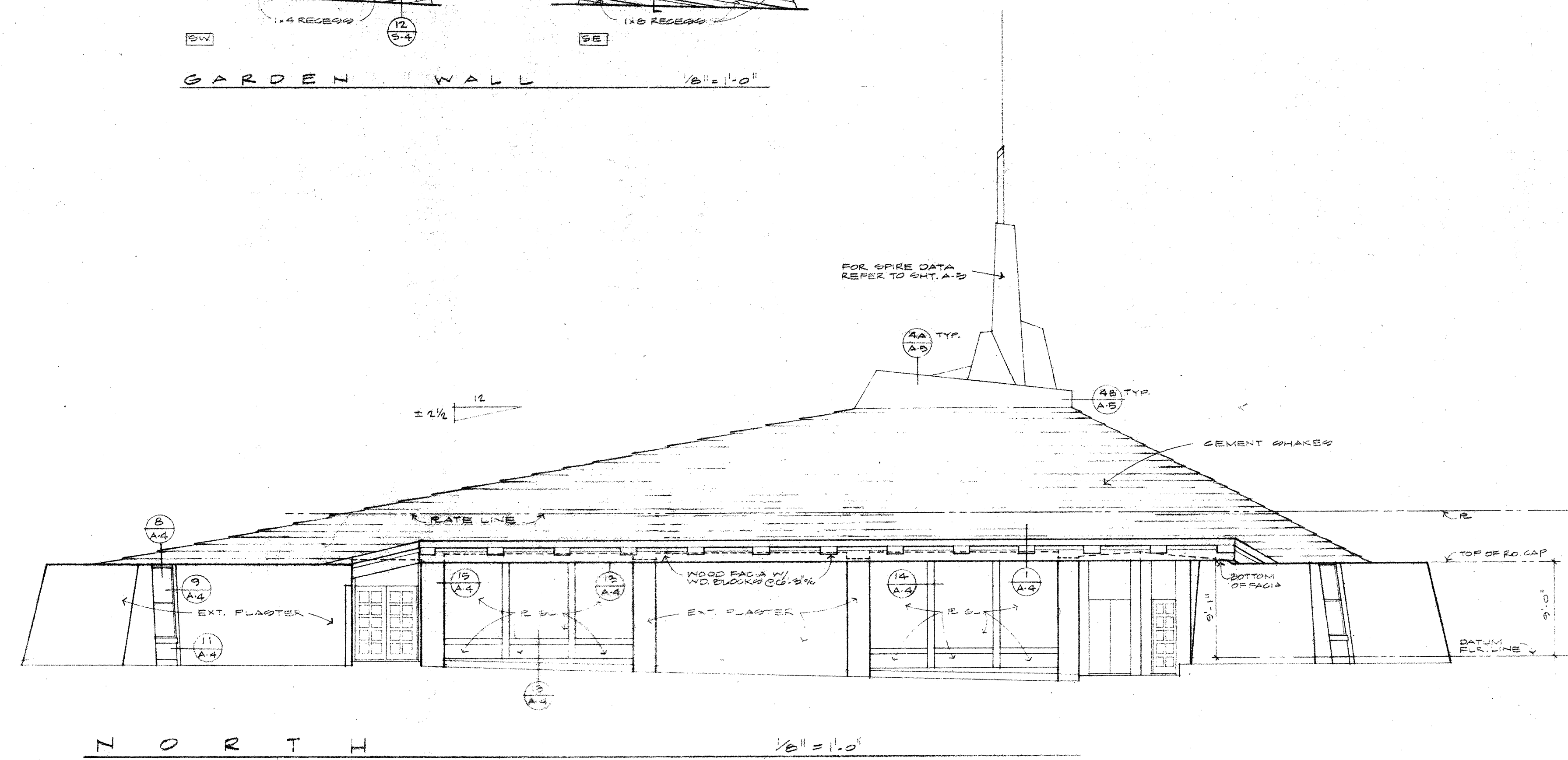
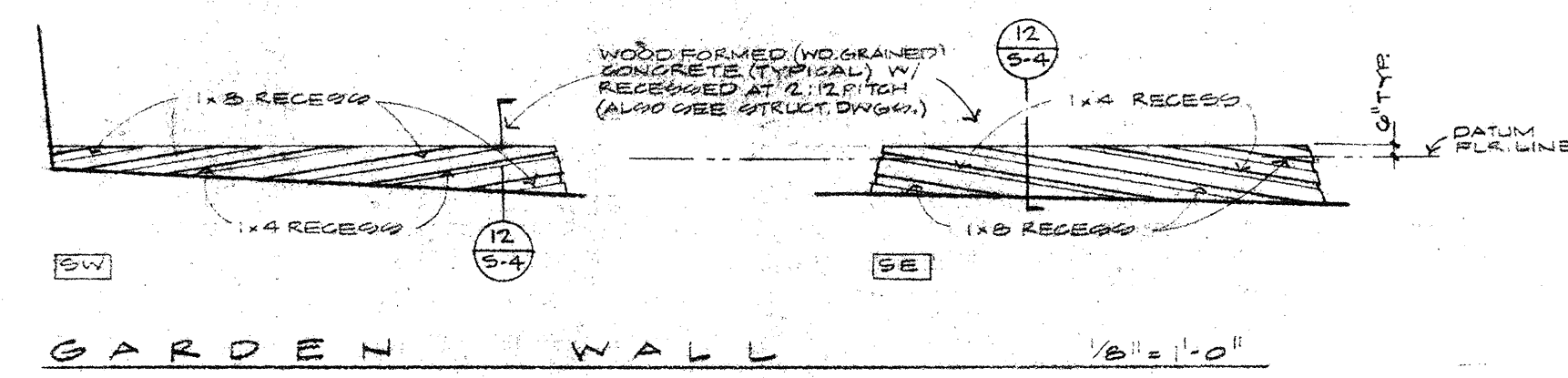
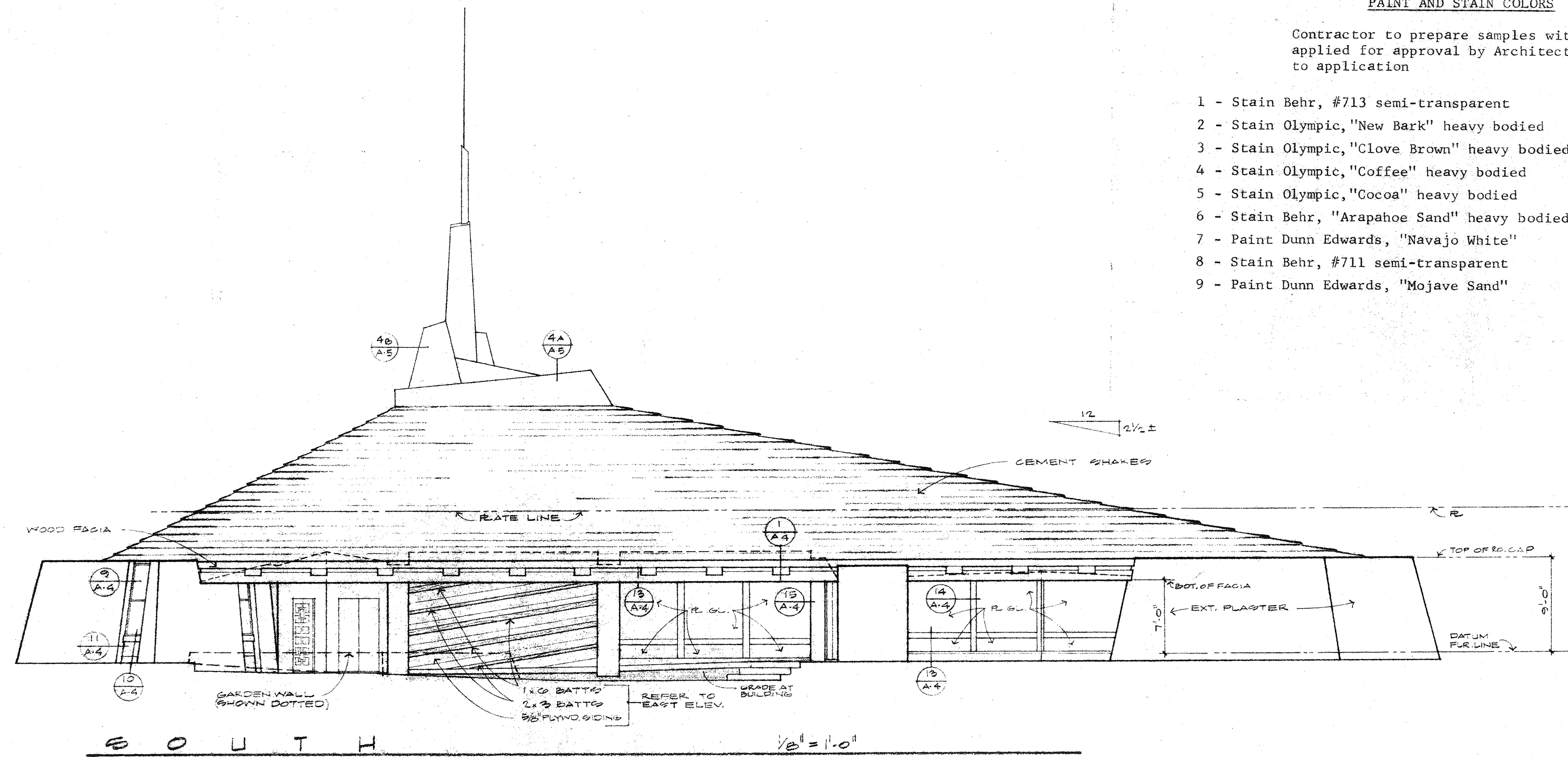


**PAINT AND STAIN COLORS**

Contractor to prepare samples with colors applied for approval by Architect prior to application

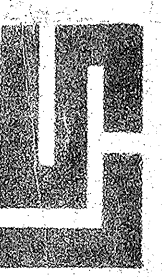
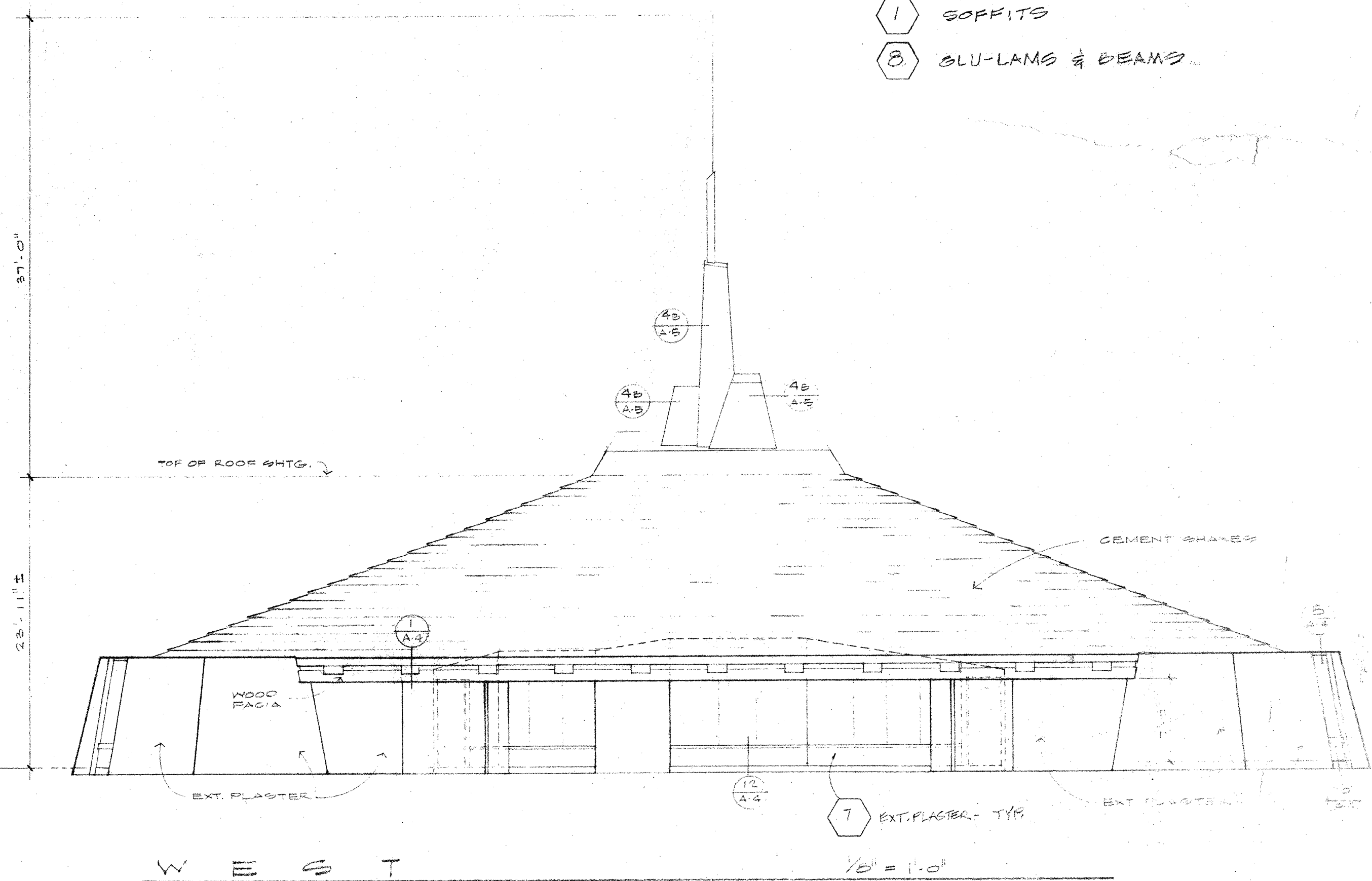
- 1 - Stain Behr, #713 semi-transparent
- 2 - Stain Olympic, "New Bark" heavy bodied
- 3 - Stain Olympic, "Clove Brown" heavy bodied
- 4 - Stain Olympic, "Coffee" heavy bodied
- 5 - Stain Olympic, "Cocoa" heavy bodied
- 6 - Stain Behr, "Arapahoe Sand" heavy bodied
- 7 - Paint Dunn Edwards, "Navajo White"
- 8 - Stain Behr, #711 semi-transparent
- 9 - Paint Dunn Edwards, "Mojave Sand"



NOTE:  
FOR PLYWOOD SPECIFICATION AT SPIRE, REFER TO SHT. A-5

NOTE:  
EXTERIOR WALL FINISH PLYWOOD SHALL BE EARLY AMERICAN, SLIGHTLY ROUGH 3/8\"/>

- INTERIOR WOOD STAINS (MATCH EXTERIOR STAIN @ SIMILAR LOCATIONS)**
- 1 SOFFITS
  - 8 GLU-LAMS & BEAMS



NO.	DATE	DESCRIPTION