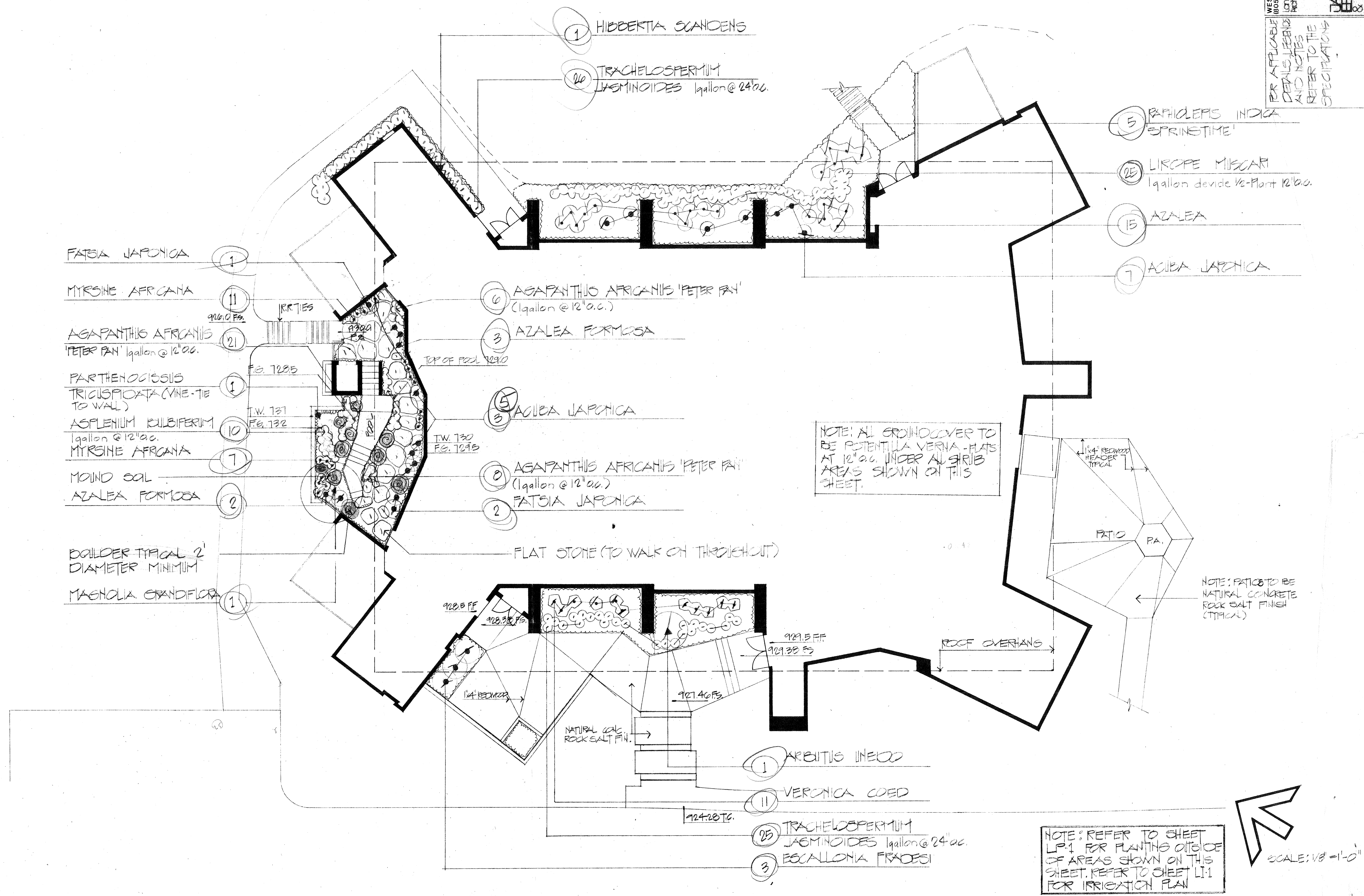


PER APPLICABLE  
 DETAILS, LEGEND  
 AND NOTES  
 REFER TO THE  
 SPECIFICATIONS



FATSIA JAPONICA

MYRSINE AFRICANA

AGAPANTHUS AFRICANUS  
 'PETER PAN' (gallon @ 12" o.c.)

PARTHENOCLISSUS  
 TRICUSPIDATA (VINE - TIE  
 TO WALL)

ASPLENIUM KULBIFERUM  
 (gallon @ 12" o.c.)

MYRSINE AFRICANA

MOINO SOL

AZALEA FORMOSA

BOULDER TYPICAL 2'  
 DIAMETER MINIMUM

MAGNOLIA GRANDIFLORA

HIBBERTIA SCANDENS

TRACHELOSPERMUM  
 JASMINOIDES (gallon @ 24" o.c.)

AGAPANTHUS AFRICANUS 'PETER PAN'  
 (gallon @ 12" o.c.)

AZALEA FORMOSA

AZALEA JAPONICA

AGAPANTHUS AFRICANUS 'PETER PAN'  
 (gallon @ 12" o.c.)

FATSIA JAPONICA

FLAT STONE (TO WALK ON THROUGHOUT)

NOTE: ALL GROUND COVER TO  
 BE POTENTILLA VERNA - PLANTS  
 AT 12" O.C. UNDER ALL SHRUB  
 AREAS SHOWN ON THIS  
 SHEET.

RAPHIDOLEPS INDICA  
 'SPRINGTIME'

LIRIOPE MISCARTI  
 (gallon divide 1/2-Plant 12" o.c.)

AZALEA

AZALEA JAPONICA

ARBITUS INELOS

VERONICA COED

TRACHELOSPERMUM  
 JASMINOIDES (gallon @ 24" o.c.)

ESCALLONIA FRAXESI

NOTE: REFER TO SHEET  
 LP-1 FOR PLANTING OUTLINE  
 OF AREAS SHOWN ON THIS  
 SHEET. REFER TO SHEET LI-1  
 FOR IRRIGATION PLAN

