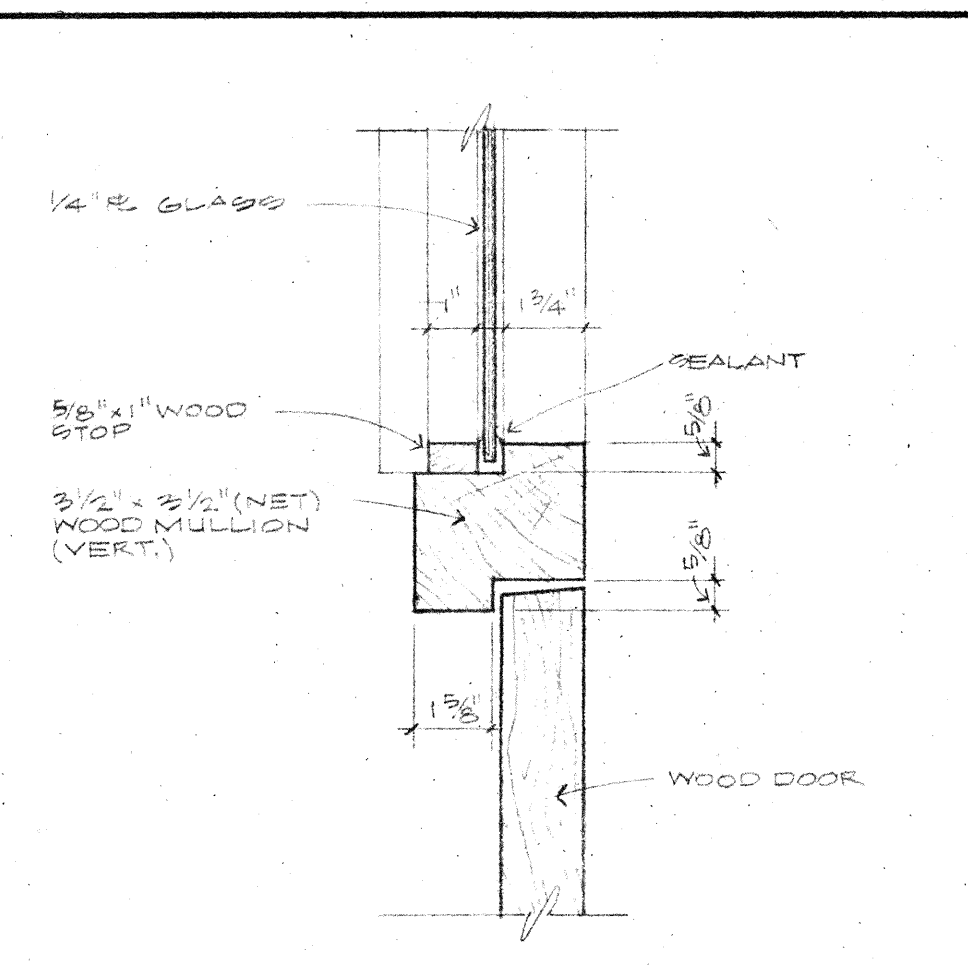
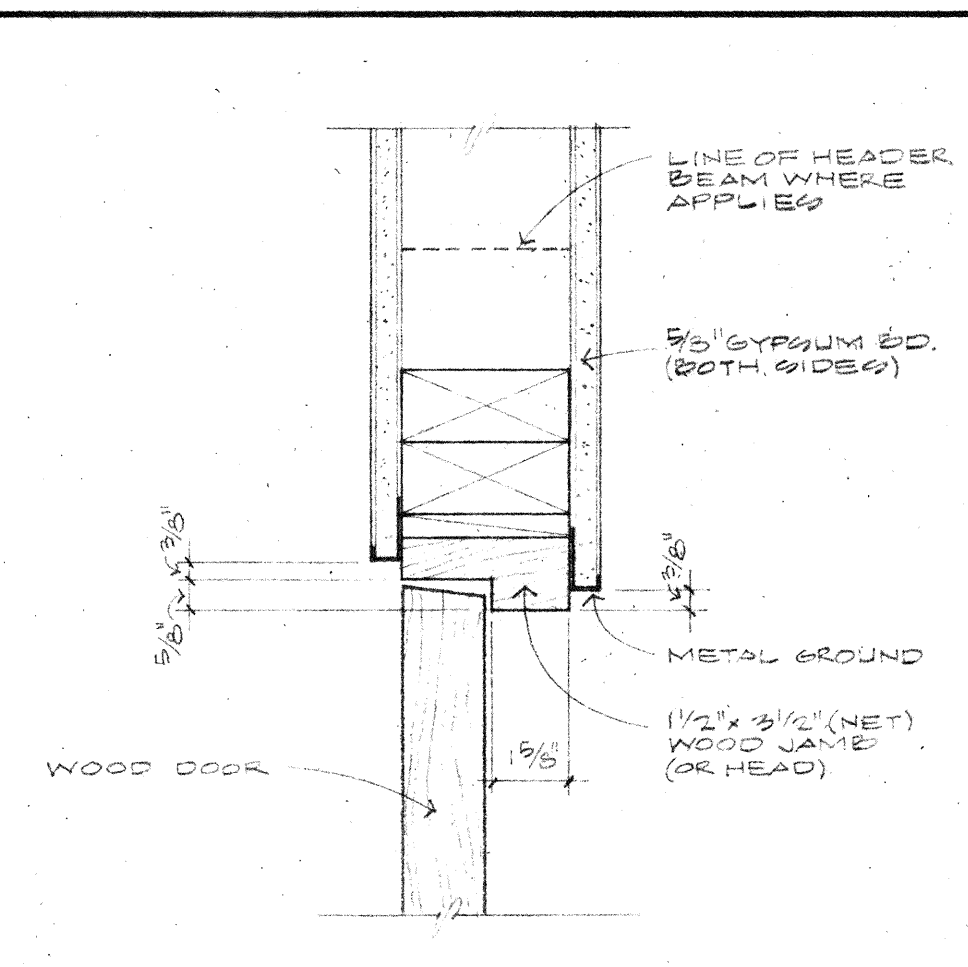


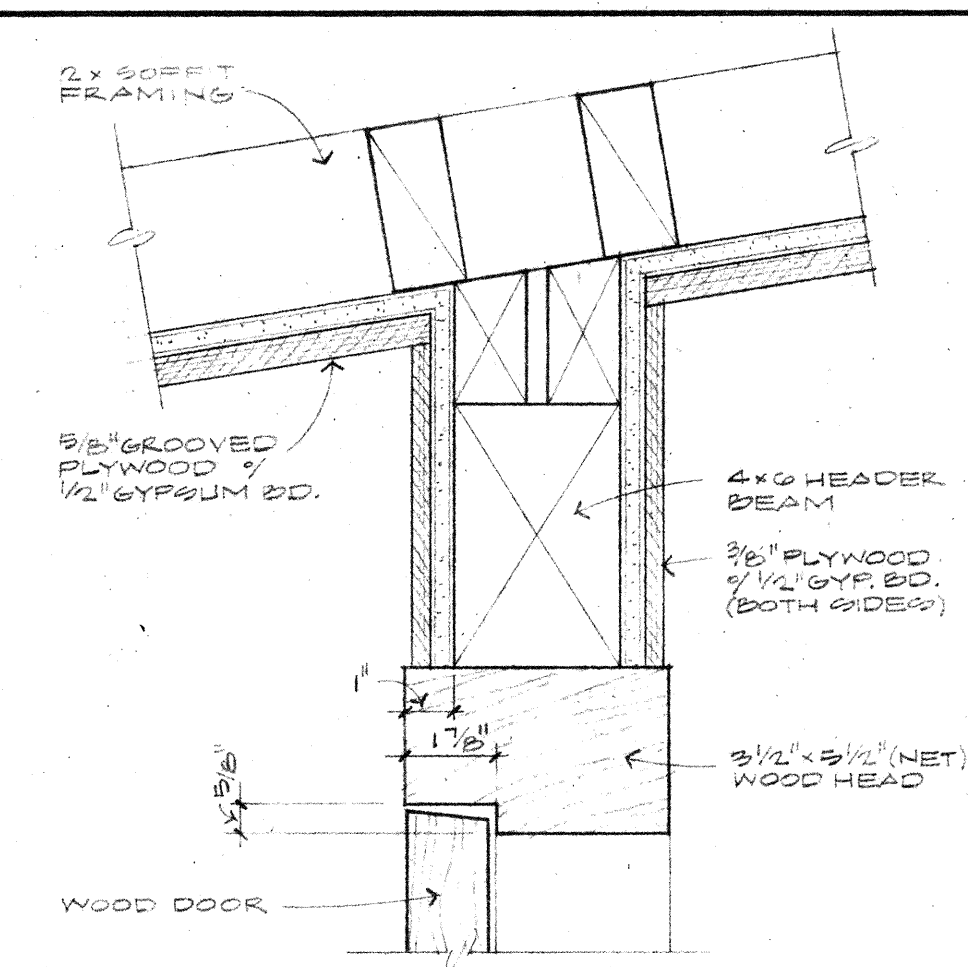
MULLION 3/8" x 1'-0" (13)



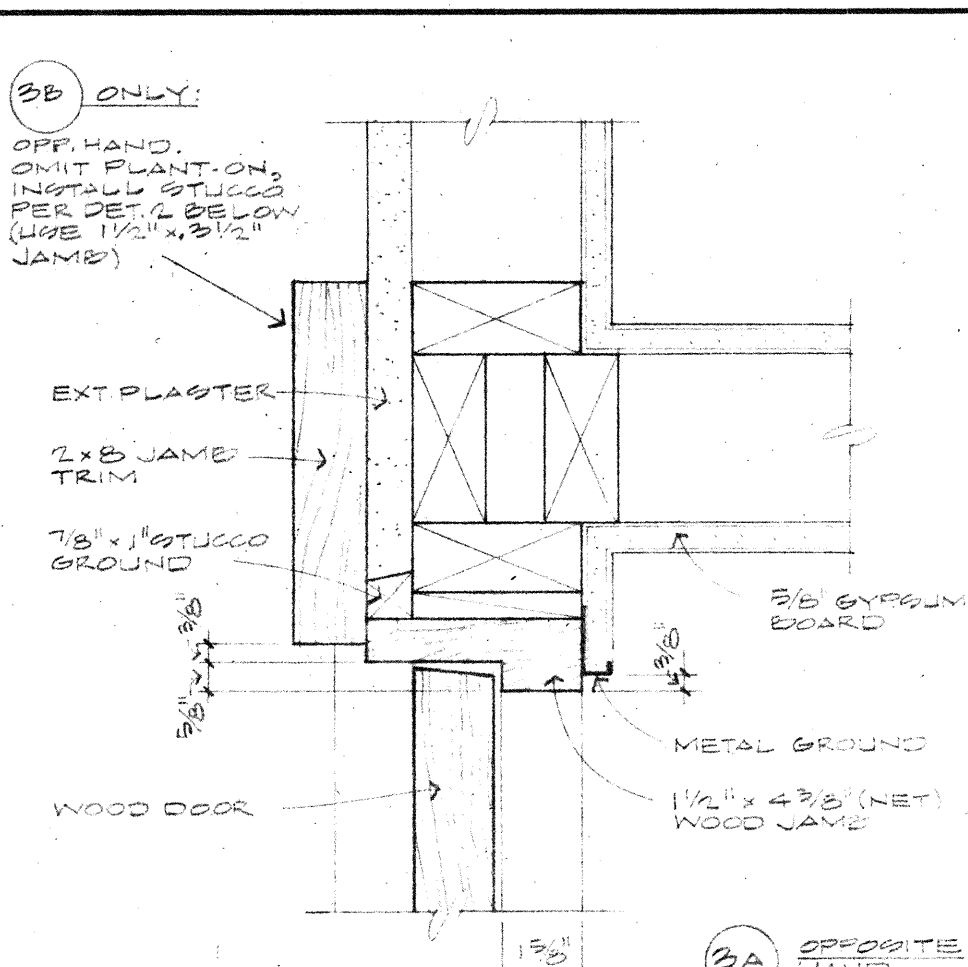
MULLION 3/8" x 1'-0" (14)



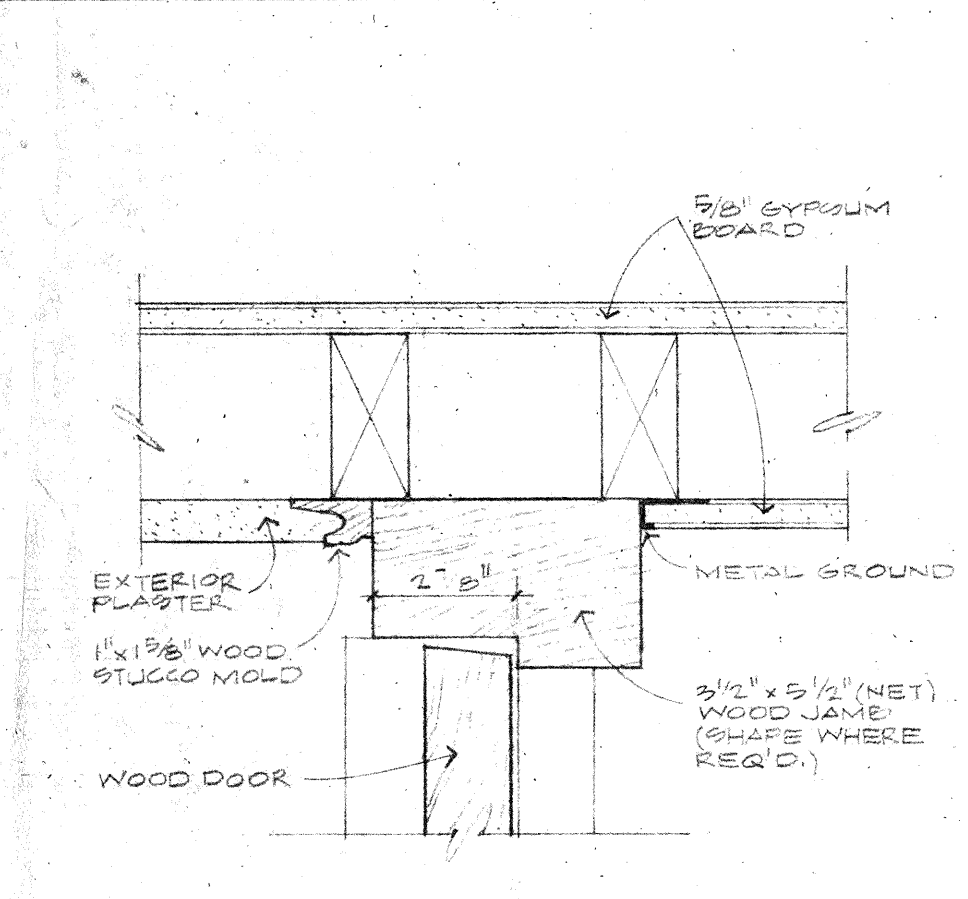
DOOR JAMB/HEAD 3/8" x 1'-0" (10)



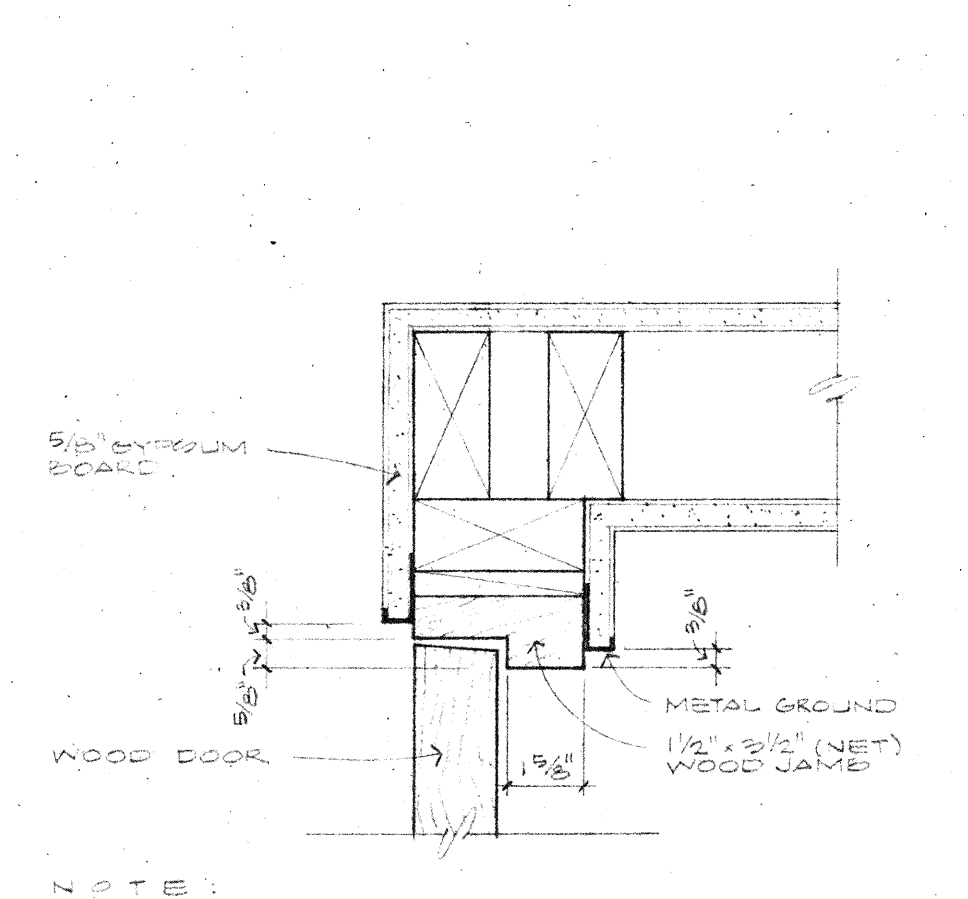
DOOR HEAD 3/8" x 1'-0" (6)



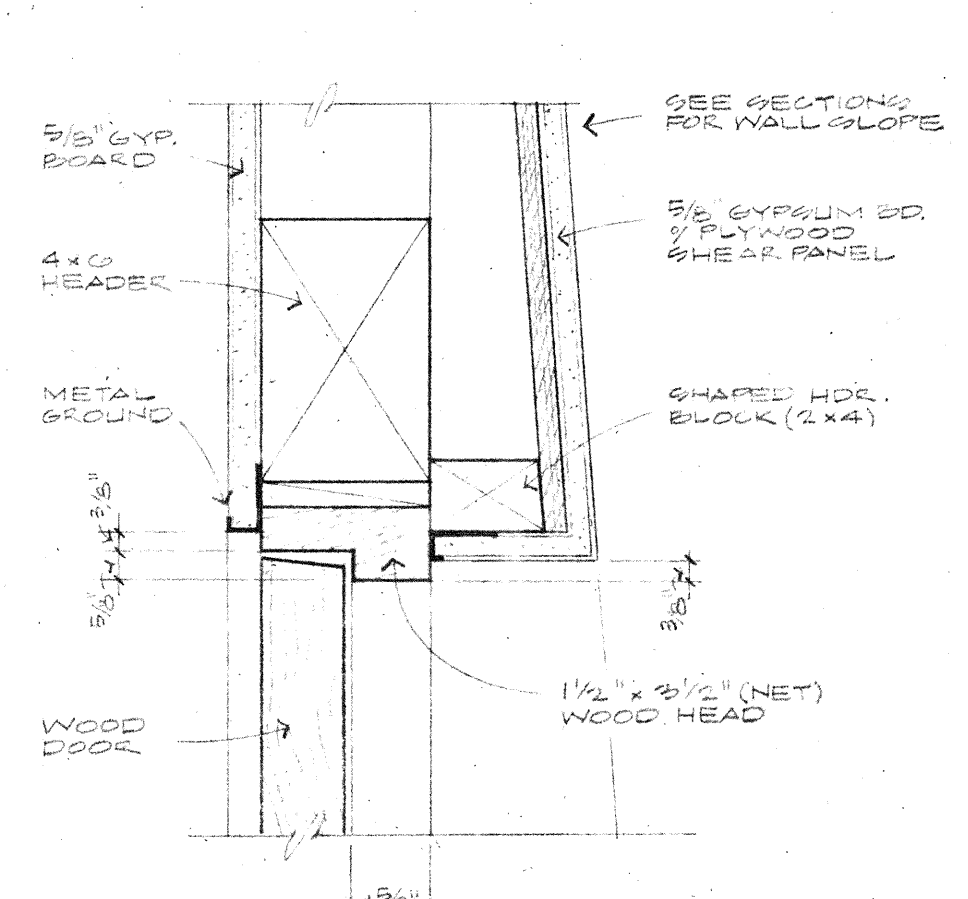
DOOR JAMB 3/8" x 1'-0" (3)



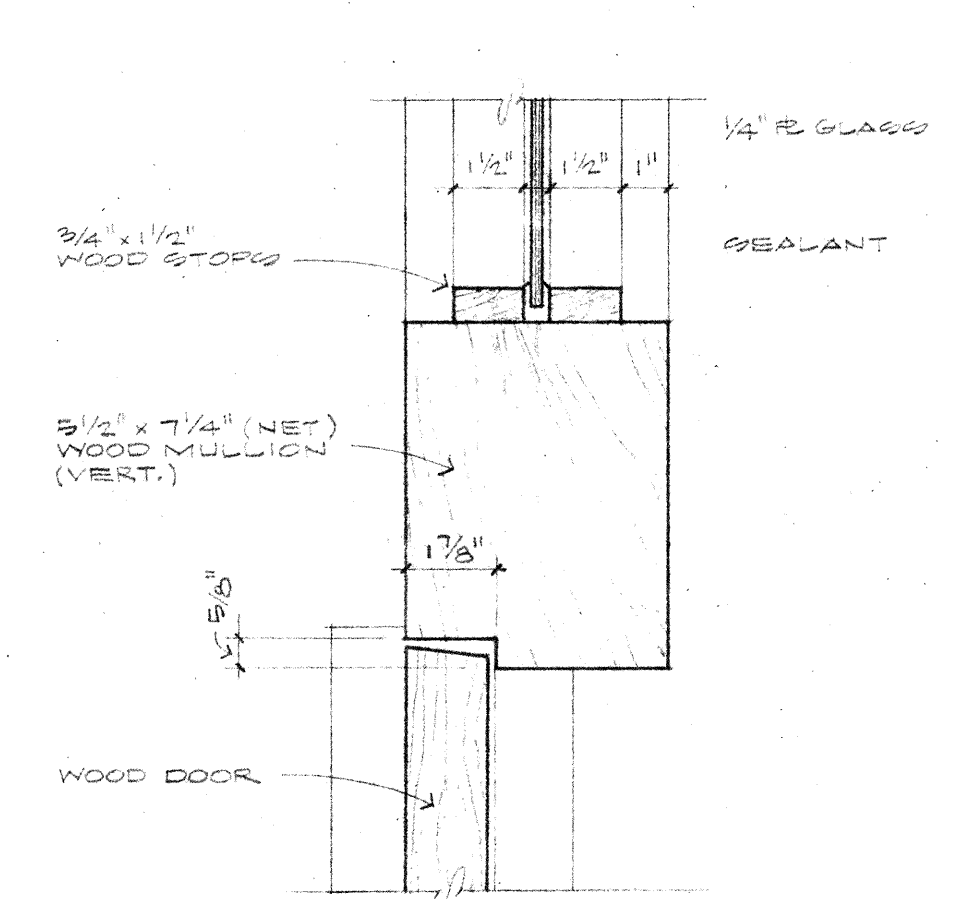
DOOR JAMB 3/8" x 1'-0" (17)



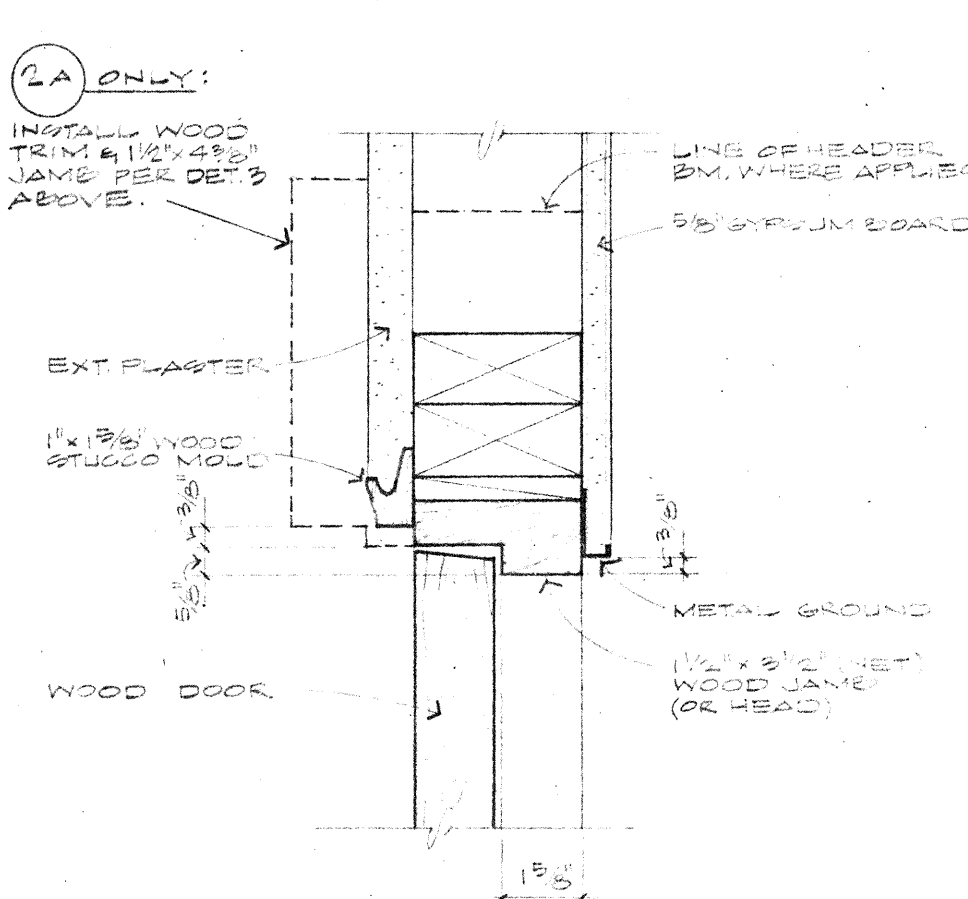
DOOR JAMB 3/8" x 1'-0" (12)



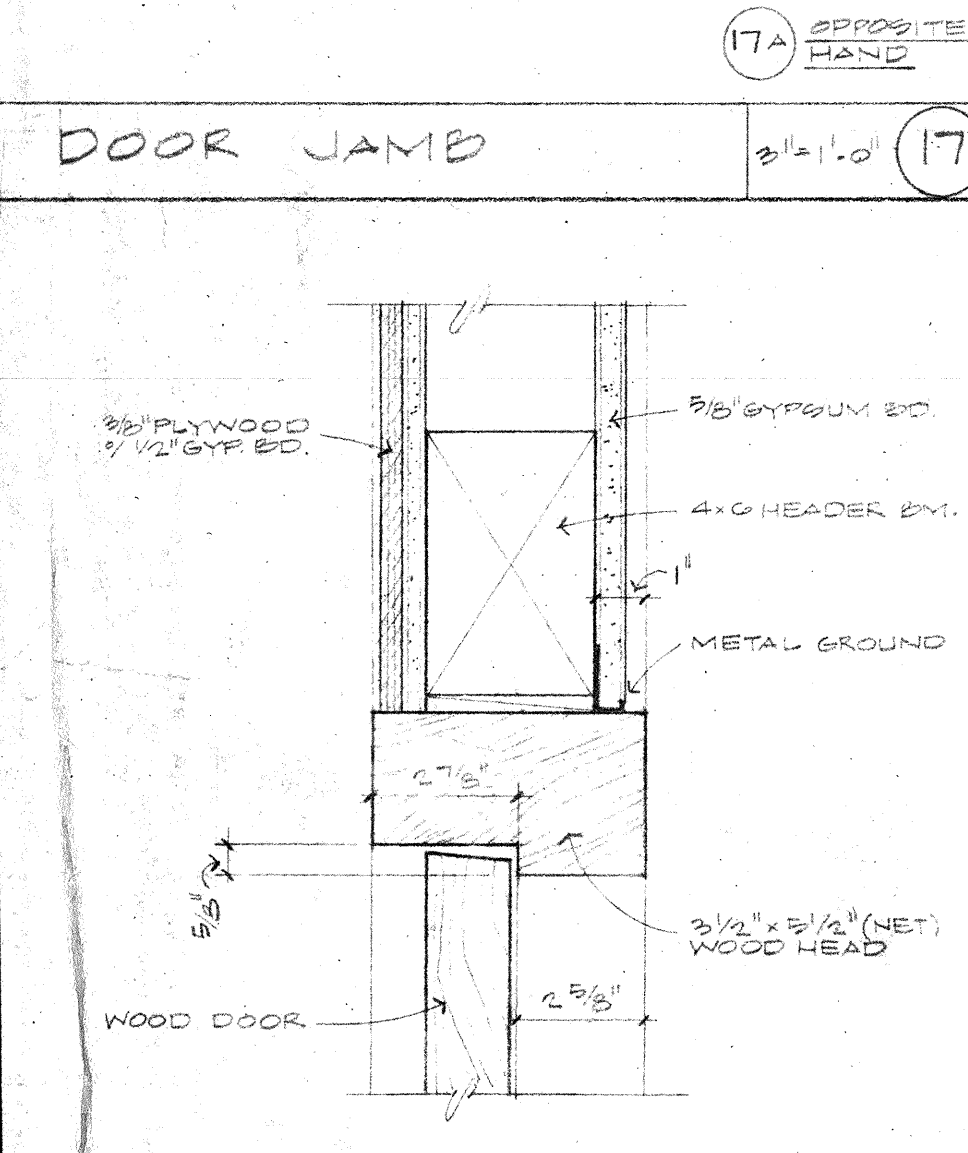
DOOR HEAD 3/8" x 1'-0" (9)



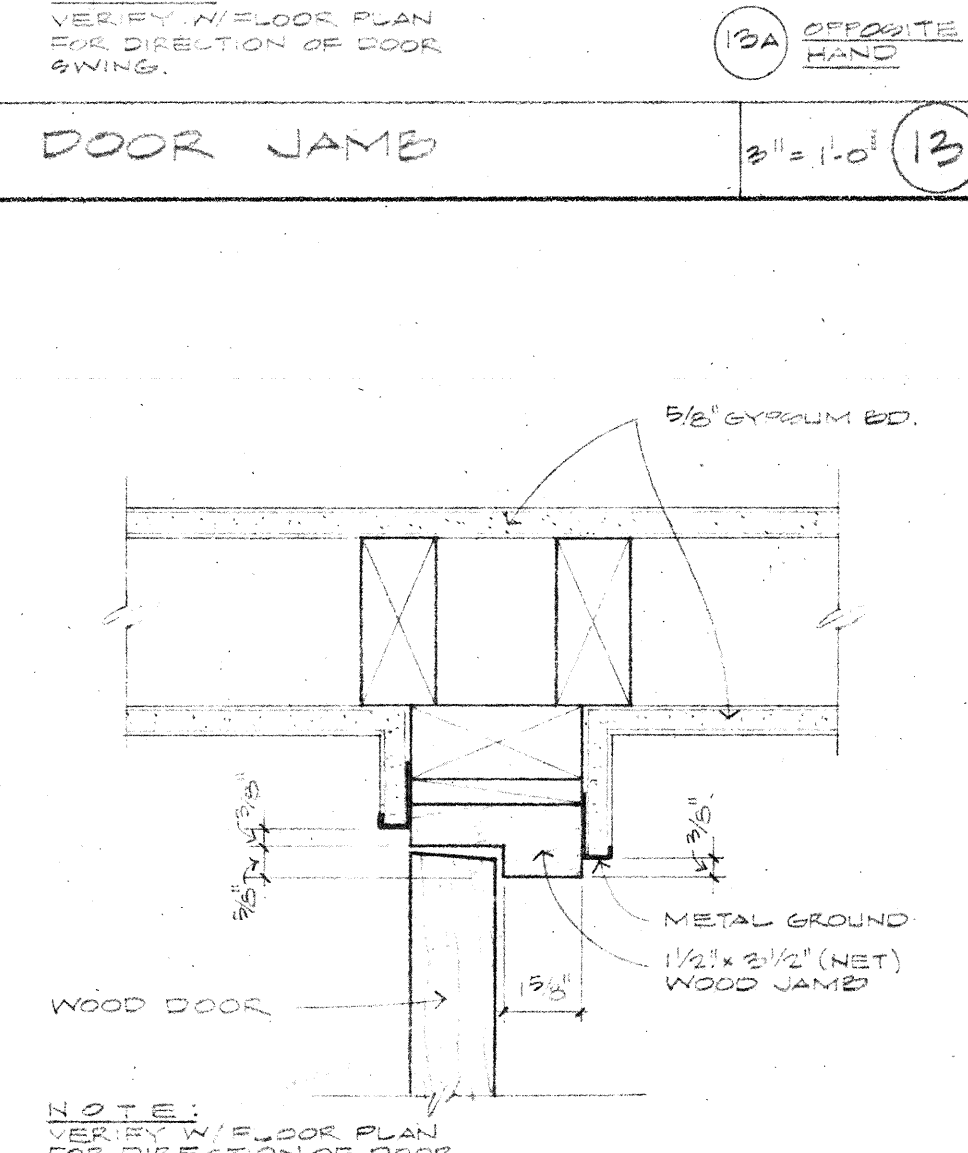
MULLION 3/8" x 1'-0" (5)



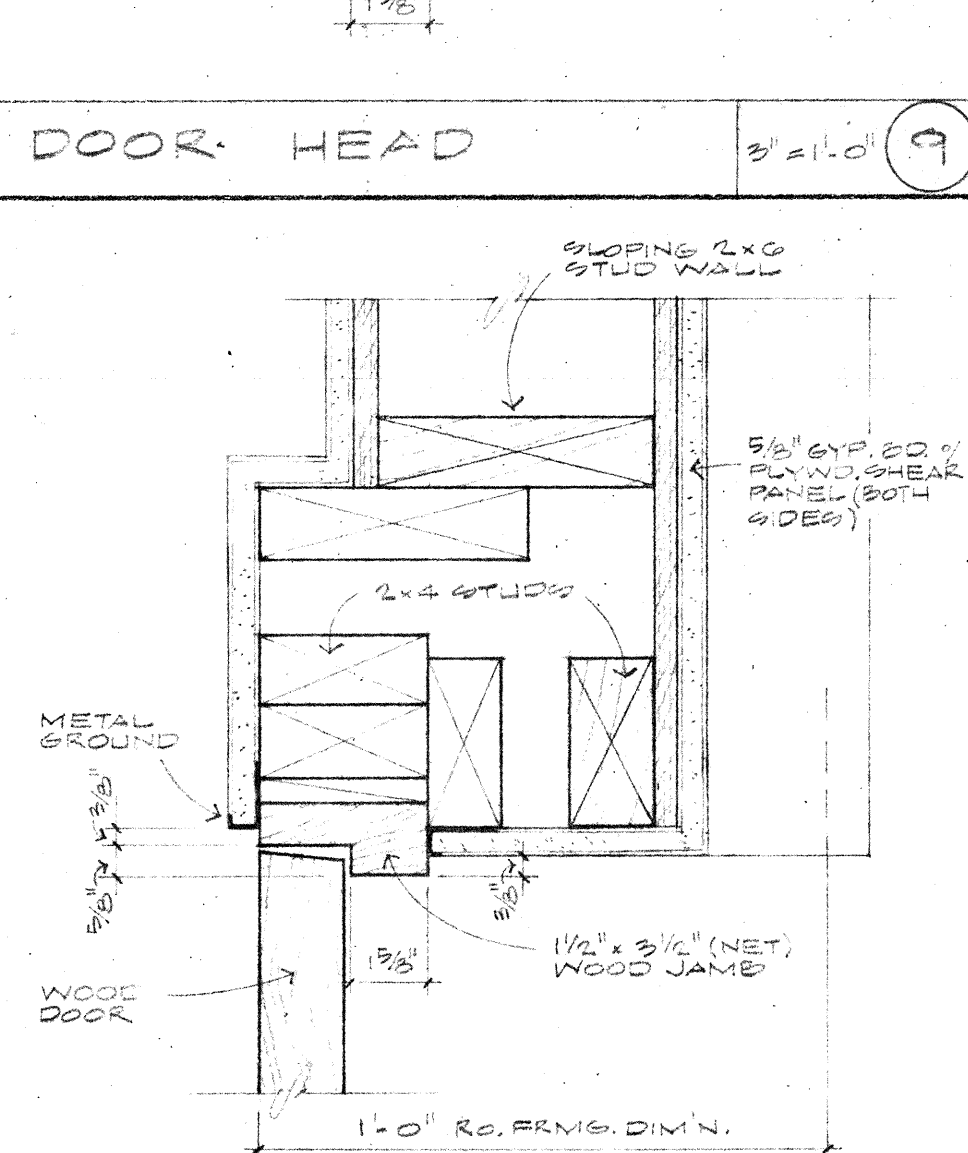
DOOR JAMB/HEAD 3/8" x 1'-0" (2)



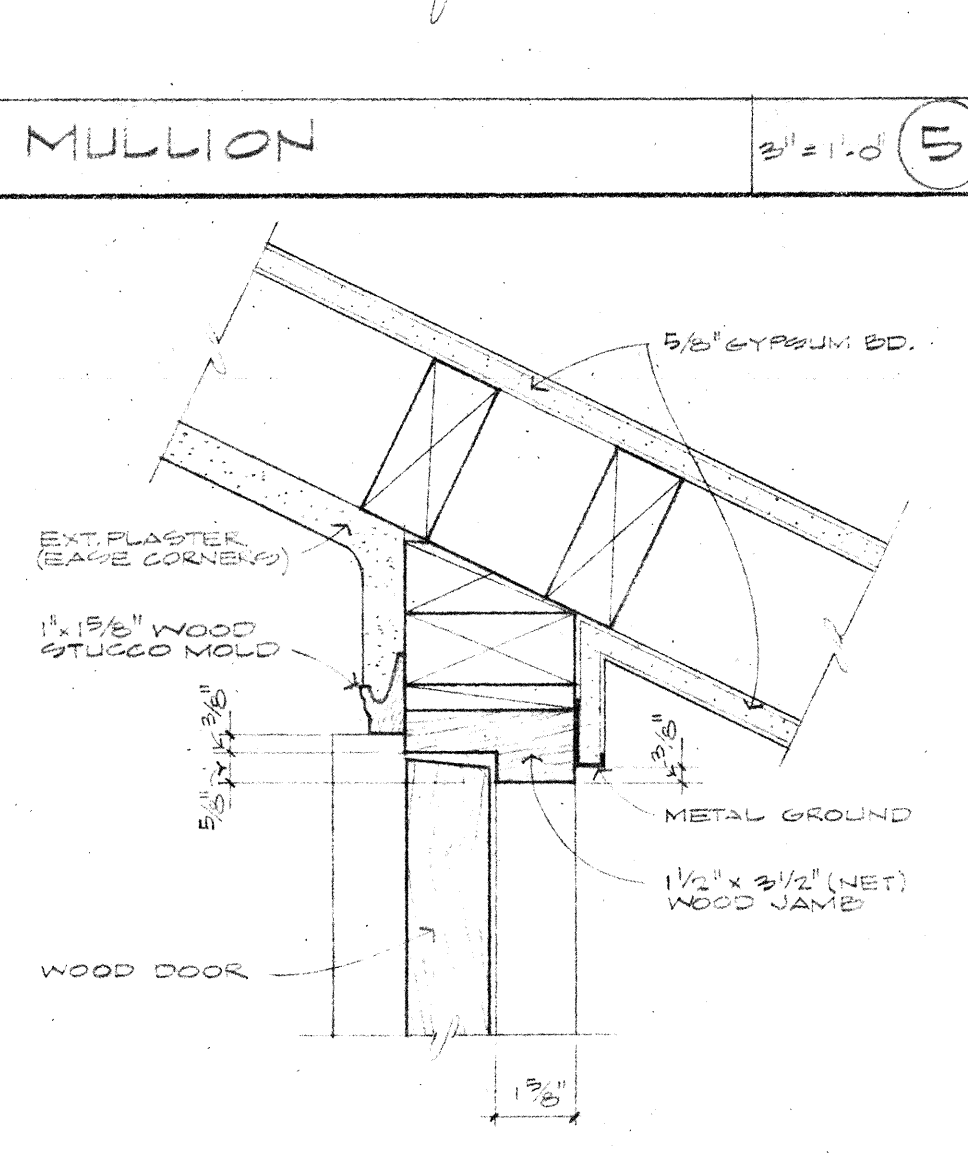
DOOR HEAD 3/8" x 1'-0" (16)



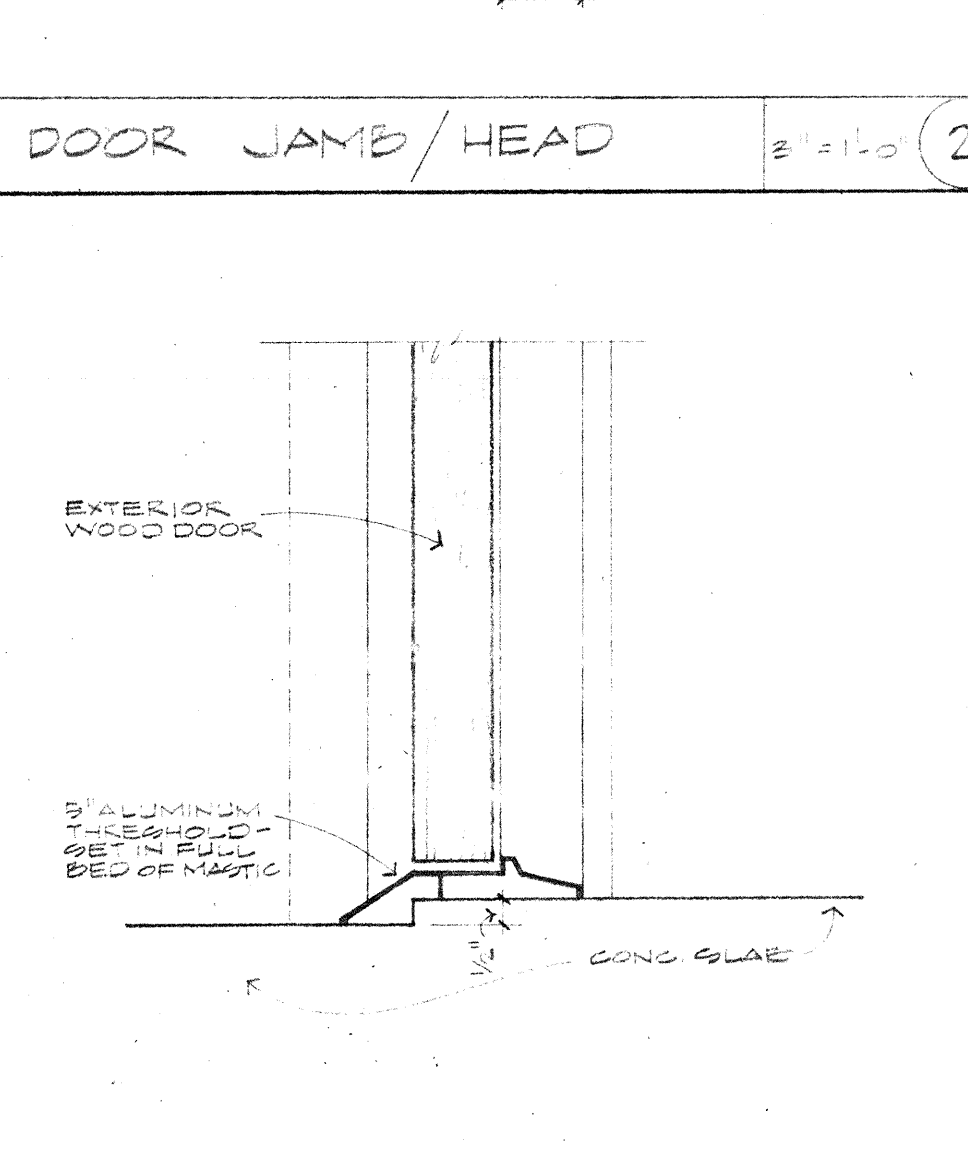
DOOR JAMB 3/8" x 1'-0" (12)



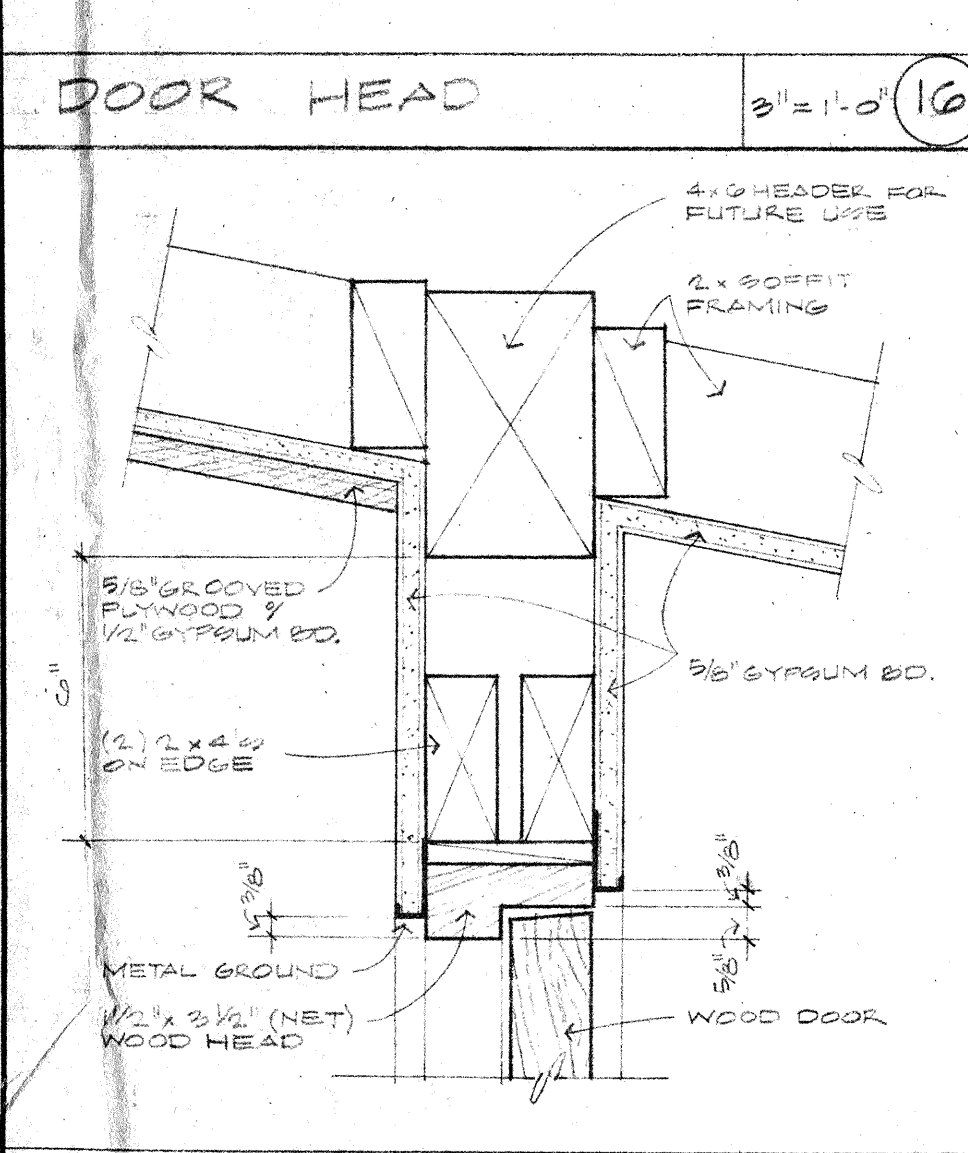
DOOR JAMB 3/8" x 1'-0" (8)



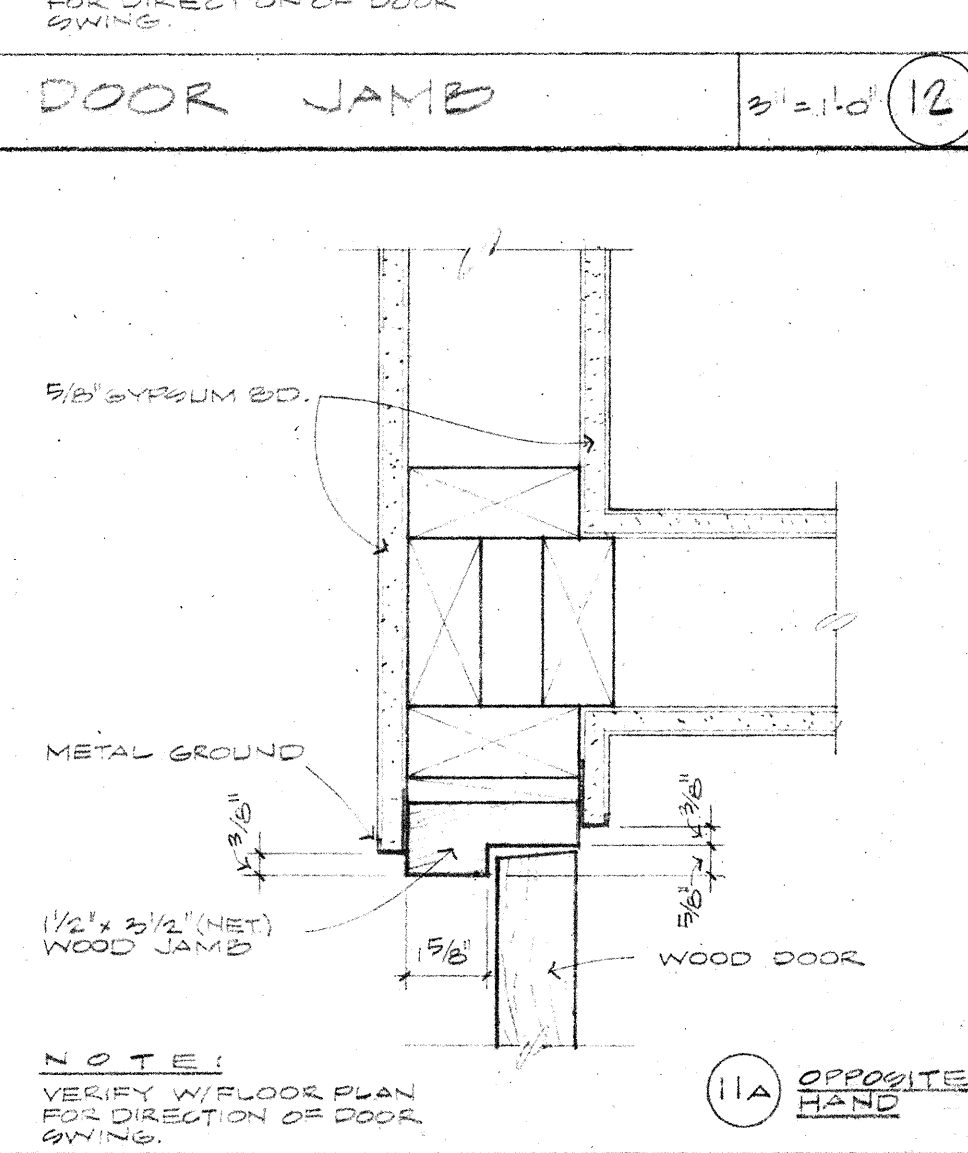
DOOR JAMB 3/8" x 1'-0" (4)



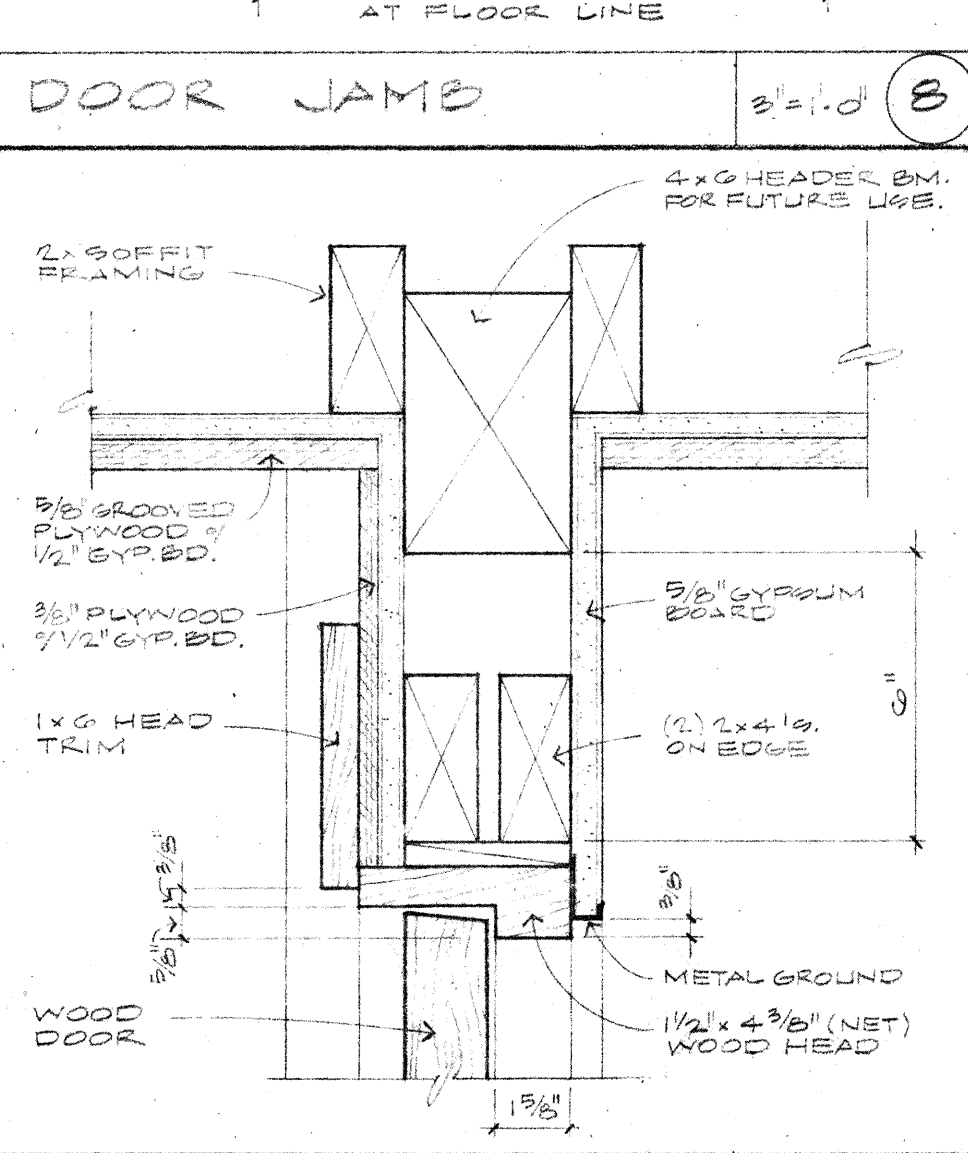
THRESHOLD 3/8" x 1'-0" (1)



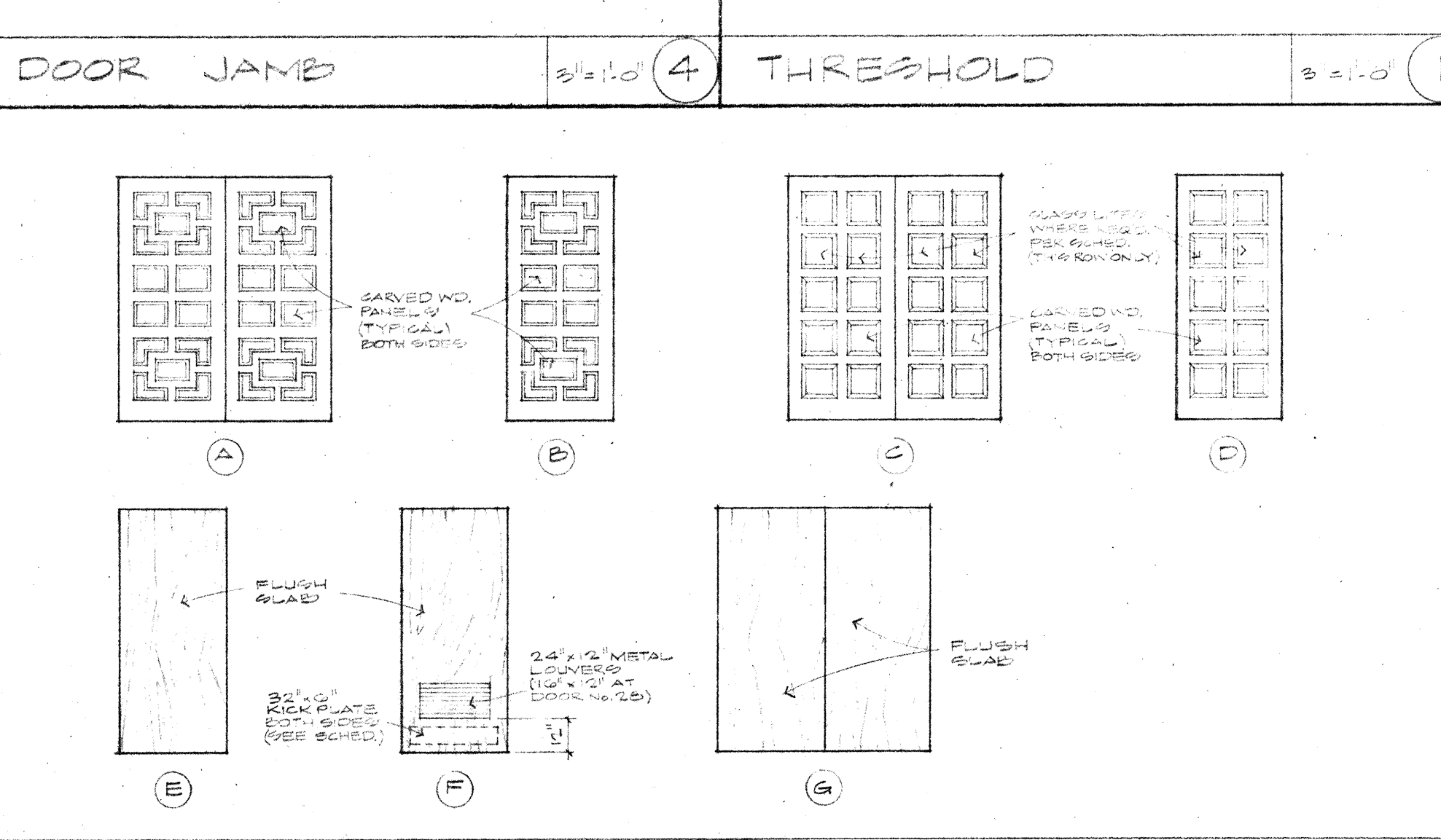
DOOR HEAD 3/8" x 1'-0" (13)



DOOR JAMB 3/8" x 1'-0" (11)



DOOR HEAD 3/8" x 1'-0" (7)



DOOR ELEVATIONS

ROOM NUMBER	FINISH SCHEDULE							MARKS
	ROOF	FLOOR	WALLS	CEILING	DOOR	WINDOW	GLASS	
101								
102								
103								
104								
105								
106								
107								
108								
109								
110								
111								
112								
113								
114								
115								
116								
117								
118								
119								
120								
121								
122								
123								
124								
125								
126								
127								
128								

DOOR NUMBER	SIZE			TYPE	MATERIAL	FINISH	FRAME/DETAIL	HOLDERS	REMARKS
	WIDTH	HEIGHT	THICK.						
1	FR 8'-0"	7'-0"	1 1/2"						
2	FR 8'-0"	7'-0"	1 1/2"						
3	FR 8'-0"	7'-0"	1 1/2"						
4	FR 8'-0"	7'-0"	1 1/2"						
5	FR 8'-0"	7'-0"	1 1/2"						
6	FR 8'-0"	7'-0"	1 1/2"						
7	FR 8'-0"	7'-0"	1 1/2"						
8	FR 8'-0"	7'-0"	1 1/2"						
9	FR 8'-0"	7'-0"	1 1/2"						
10	FR 8'-0"	7'-0"	1 1/2"						
11	FR 8'-0"	7'-0"	1 1/2"						
12	FR 8'-0"	7'-0"	1 1/2"						
13	FR 8'-0"	7'-0"	1 1/2"						
14	FR 8'-0"	7'-0"	1 1/2"						
15	FR 8'-0"	7'-0"	1 1/2"						
16	FR 8'-0"	7'-0"	1 1/2"						
17	FR 8'-0"	7'-0"	1 1/2"						
18	FR 8'-0"	7'-0"	1 1/2"						
19	FR 8'-0"	7'-0"	1 1/2"						
20	FR 8'-0"	7'-0"	1 1/2"						
21	FR 8'-0"	7'-0"	1 1/2"						
22	FR 8'-0"	7'-0"	1 1/2"						
23	FR 8'-0"	7'-0"	1 1/2"						
24	FR 8'-0"	7'-0"	1 1/2"						
25	FR 8'-0"	7'-0"	1 1/2"						
26	FR 8'-0"	7'-0"	1 1/2"						
27	FR 8'-0"	7'-0"	1 1/2"						
28	FR 8'-0"	7'-0"	1 1/2"						
29	FR 8'-0"	7'-0"	1 1/2"						
30	FR 8'-0"	7'-0"	1 1/2"						
31	FR 8'-0"	7'-0"	1 1/2"						
32	FR 8'-0"	7'-0"	1 1/2"						
33	FR 8'-0"	7'-0"	1 1/2"						
34	FR 8'-0"	7'-0"	1 1/2"						
35	FR 8'-0"	7'-0"	1 1/2"						
36	FR 8'-0"	7'-0"	1 1/2"						

* DOOR NO. 2, 15, 16, 17 TO HAVE BOTTOM CUT IN LINE W/ FLOOR SLOPE; ALSO WEST LEAF OF DOOR NO. 2 TO HAVE BOTTOM CUT W/ FLOOR SLOPE, EXCEPT W/ UNDERCUT (BOLT LEAF TO BE FLUSH CUT AT 7'-0" 7-1/4" HGT. AT DOOR HEAD).