

NOTES

1. ELECTRICAL CONTRACTOR SHALL VERIFY ALL POWER CO. REQUIREMENTS AND ALL TELEPHONE CO. REQUIREMENTS PRIOR TO BID SUBMITTAL AND HE SHALL INCLUDE THE COST OF ALL REQUIREMENTS IN HIS BID INCLUDING ANY CABLE CHARGES.
2. ELECTRICAL CONTRACTOR SHALL VERIFY THE MAXIMUM AVAILABLE FAULT CURRENT FROM THE POWER CO. PRIOR TO BID SUBMITTAL. ALL CIRCUIT PROTECTIVE DEVICES SHALL HAVE AN INTERRUPTING RATING TO PROTECT THE ELECTRICAL SYSTEM AGAINST THE MAXIMUM AVAILABLE FAULT CURRENT. CIRCUIT BREAKERS MAY BE USED IN LIEU OF SWITCHES PROVIDED ALL FAULT CURRENT REQUIREMENTS ARE COMPLIED WITH.
3. IN ADDITION TO WIRING HERE INDICATED ELECTRICAL CONTRACTOR SHALL REVIEW MECHANICAL DWGS. PRIOR TO BID SUBMITTAL AND HE SHALL INCLUDE IN HIS BID ALL WIRING AND MATERIALS INDICATED THEREON AS PART OF ELECTRICAL WORK.
4. FURNISH AND INSTALL A CODE APPROVED 1/2" RATED DISCONNECT SWITCH AT ALL MOTORS AUTOMATICALLY CONTROLLED AND AT ALL MOTORS MANUALLY CONTROLLED WHICH ARE NOT WITHIN SIGHT OF THE CONTROLLER.
5. ALL PANELS WHEN INDICATE THAT TIME SWITCHES (TS) CONTROL BRANCH CIRCUITS IN RESPECTIVE PANEL SHALL BE FURNISHED WITH A SEPARATE COMPARTMENT BEHIND A SEPARATE DOOR. COMPARTMENT SHALL BE EQUIPPED WITH NUMBER ONE TIME SWITCHES. TWO ADDITIONAL TIME SWITCHES. TIME SWITCHES SHALL HAVE ASTRO DIAL SILVER CONTACTS 30 AMP MINIMUM RATING. FURNISH NUMBER OF CONTACTS AS INDICATED ON DWG. ALL SWITCHES SHALL BE INSTALLED TO OPERATE OR INTERMATIC. FURNISH 1/2" CONTACTS AS REQ'D.
6. TIME SWITCHES FOR AC UNITS SHALL HAVE T-DAY DIAL WITH SKIP-A-DAY FEATURE. NO ASTRO DIAL.
7. ELECTRICAL CONTRACTOR SHALL REVIEW ALL DWGS. OF OTHER TRADES HE SHALL INCLUDE IN HIS BID ALL WIRING AND MATERIALS NECESSARY TO OPERATE DEVICES INDICATED THEREON AS PART OF HIS BID.
8. ALL CONDUIT STUB-OUT LOCATIONS FOR OUTLET USE SHALL BE MADE WITH A 1/2" CUBE MOUNTMENT WITH A 3" SQUARE BRONZE PLATE SWISS JOINT INDICATING NUMBER, SIZE AND DEPTH OF CONDUITS BELOW.
9. ALL WIRES FOR FUTURE USE SHALL BE IDENTIFIED BY CIRCUIT NUMBER USING PLASTIC "DYN-O" LABELS ATTACHED PERMANENTLY TO EACH WIRE.
10. FURNISH AND INSTALL A LIGHTNING ARRESTOR AT TOP OF CROSS AS DIRECTED BY ARCHITECT. CAD-WELD 1/4" GROUND CONDUCTOR TO CROSS BASE AND LOOP AS INDICATED. CONNECT TO GROUND EXTEND LOOP TO J.B. AND CONTINUE IN 3/4" CONDUIT TO GROUND. SEE DETAILS ON DWG. ALL WIRING INSTALLATION SHALL COMPLY WITH NFPA BULLETIN #78 AND ALL APPLICABLE CODES.

PANEL A

CIR. BREAKER NO.	AMP POLE	OUTLET	LTS.	R.C.	M.I.D.	LOCATION	LOAD - WATTS		
							L1	L2	L3
1	20	1	0			NURSERY CLASS RM., OUTSIDE	1740		
2		2	0			FOYER, CLASS RM.	1600		
3		1	0			ELEC. EQUIP., MEN, WOMEN, VEST		800	
4		1	0			CLASS RM., WALL			1700
5		1	0			FOYER, UTILITY			400
6		1	0			CLASS RM., MEN, WOMEN, NURSERY, FOYER	180		
7		1	0			ELECT. EQUIP., TEL. RACKS	1200		
8		1	0			CLASS RM., UTILITY, FOYER, NURSERY			1200
9		1	0			UTILITY, KITCHEN UNIT	1800		
10		1	0			CLASS RM., FOYER	900		
11		1	0			CLASS RM., FOYER			1800
12	20	1	0			EXIT LIGHTS	200		1000
13		1	0			SPACE	640		
14		1	0			SPACE	1800		
15		1	0			SPACE	1800		
16		1	0			ELECT. EQ. RM. - SPRINKLER CONTROLLER			750
17		1	0			JANITRY - H.W. HTS.			250
18		1	0			OUTSIDE	1620		260
19		1	0			OUTSIDE	260		300
20		1	0			OUTSIDE			1500
21		1	0			OUTSIDE			720
22		1	0			OUTSIDE			1200
23		1	0			OUTSIDE			1500
24		1	0			OUTSIDE			1500
25		1	0			OUTSIDE			1500
26		1	0			OUTSIDE			1500
27		1	0			OUTSIDE			1200
28		1	0			OUTSIDE			1200
29		1	0			OUTSIDE			1200
30		1	0			OUTSIDE			1200
TOTALS							9160	10,680	10,680

TOTALS 29,520 WATTS = 84 AMPS @ 200V, 3 P
T.O. #1 CONTROLS CIR. # 29, 28, 24 & 27 SEE NOTE #5

PANEL PA

CIR. BREAKER NO.	AMP POLE	OUTLET	LTS.	R.C.	M.I.D.	LOCATION	LOAD - WATTS		
							L1	L2	L3
1	20	1	0			FOYER PH-5	1670	1670	1670
2		1	0			CLASS RM. PH-6	2500	2500	
3		1	0			FOYER PH-6	1500	1500	1500
4		1	0			CLASS RM. PH-4	1500	1500	1500
5	20	1	0			PH-7	1240	1240	1240
6	30	1	0			PH-8	1870	1870	1870
7	40	1	0			PH-9	2340	2340	2340
8		1	0			FOYER PH-9	1870	1870	1870
9		1	0			SPACE PH-9	2340	2340	2340
TOTALS							14,770	14,770	14,770

TOTALS 39,960 WATTS = 112 AMPS @ 200V, 3 P

LEGEND

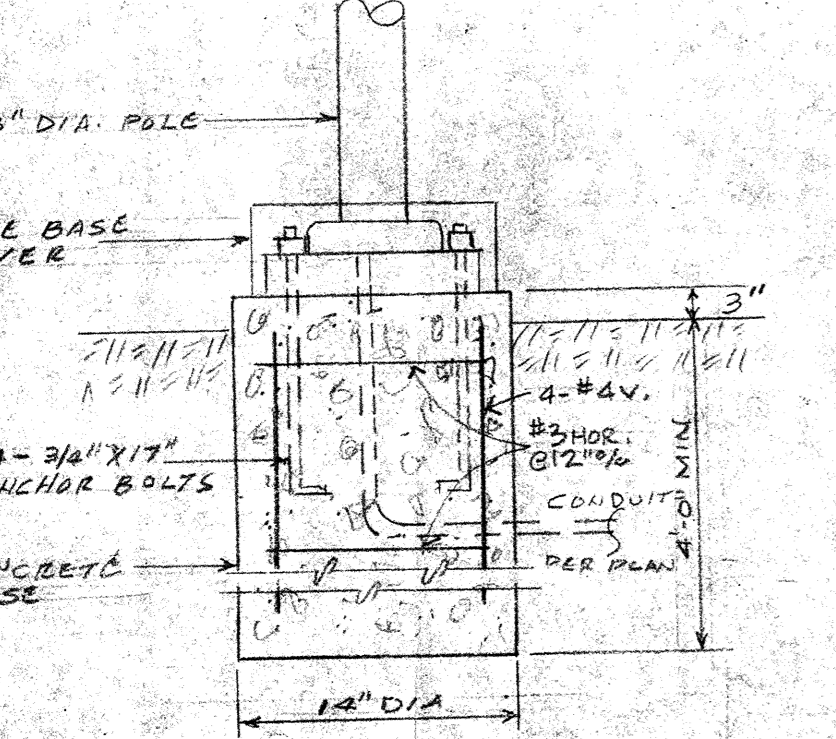
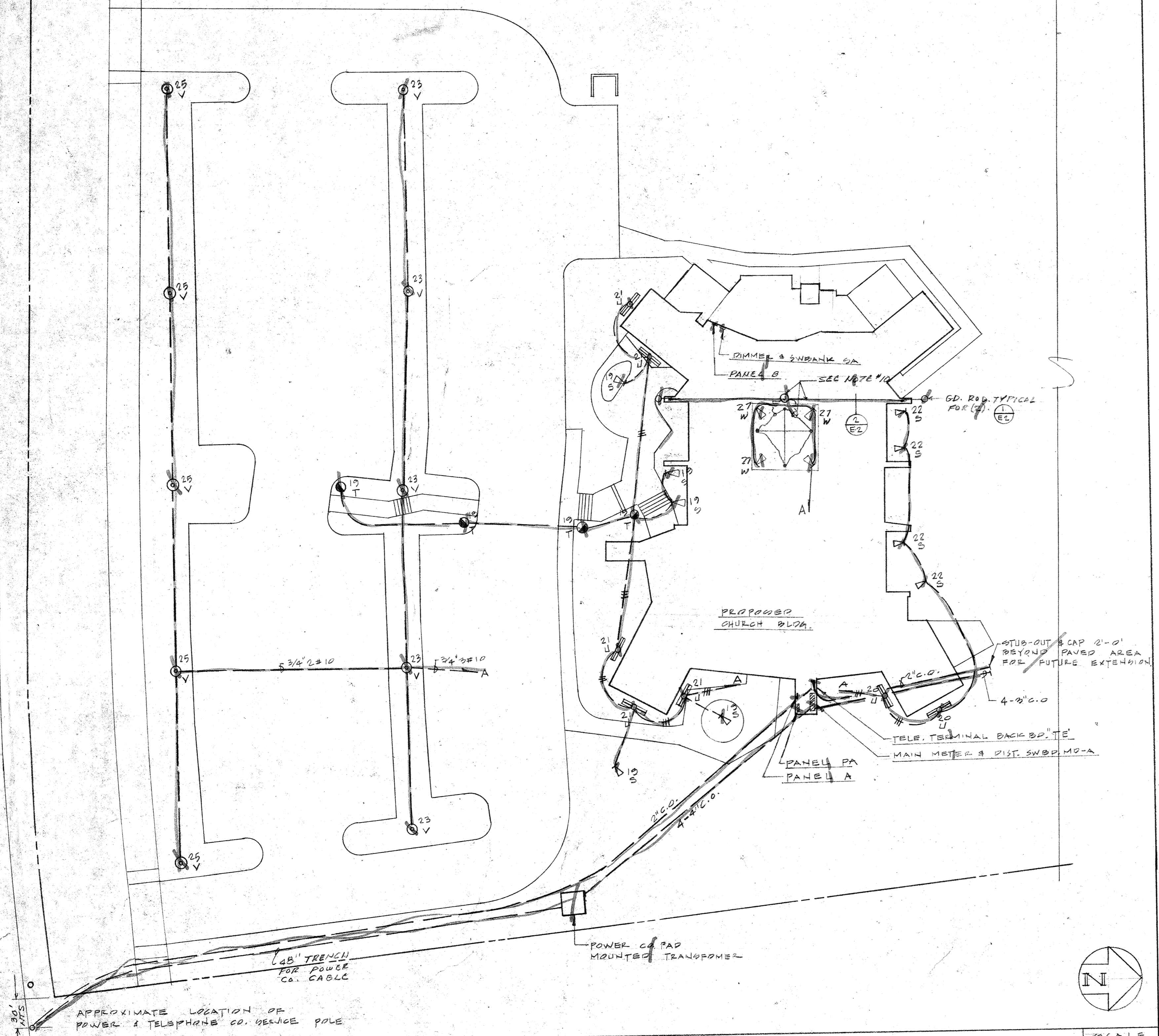
SYMBOL	DESCRIPTION
---	CONDUIT RUN CONCEALED IN WALL OR CEILING. HASH MARKS INDICATE NUMBER OF #12 WIRES IN CONDUIT. MAXIMUM: 3 #12 IN 1/2" CONDUIT; 5 #12 IN 3/4" CONDUIT; 8 #12 IN 1" CONDUIT. NO HASH MARKS INDICATE 2 #12 IN 1/2" CONDUIT. OTHERS AS NOTED.
---	CONDUIT RUN UNDERGROUND OR UNDER SLAB. RIGID STEEL ONLY
---	HOME RUN TO PANEL "A"
---	HOME RUN TO COMMUNICATIONS PANEL OR EQUIPMENT
---	LIGHTING OR APPLIANCE PANEL
---	POWER OR DISTRIBUTION PANEL
---	COMMUNICATIONS PANEL
○	CEILING OUTLET WITH SURFACE OR PENDANT MOUNTED INCANDESCENT LIGHTING FIXTURE. "K" INDICATES FIXTURE TYPE. NOTATION "8a" INDICATES CIRCUIT NUMBER AND CONTROLLING SWITCH.
○	CEILING OUTLET WITH RECESSED INCANDESCENT LIGHTING FIXTURE
○	WALL OUTLET WITH WALL MOUNTED LIGHTING FIXTURE
○	CEILING OUTLET WITH CEILING OR PENDANT MOUNTED FLUORESCENT LIGHTING FIXTURE
○	GRADE MOUNTED FLUORESCENT LIGHTING FIXTURE
○	FLOODLIGHT, WALL OR GRADE MOUNTED
○	POLE MOUNTED FIXTURE
○	LANDSCAPE OR PLANTER LIGHT
○	EXIT LIGHT
○	CONVENIENCE WALL OUTLET WITH DUPLEX GROUNDING TYPE RECEPTACLE. M.H. + 6" ABOVE COUNTER AND TABLE TOPS. 1/2" IN HOLES. OTHER AREAS M.H. + 8" EXCEPT WHERE NOTED OTHERWISE. ALL OUTLETS ABOVE COUNTER TOPS SHALL BE MOUNTED HORIZONTALLY.
○	FLUSH FLOOR MOUNTED RECEPTACLE
○	FLUSH FLOOR MTD. MICROPHONE OUTLET
○	POWER OUTLET 230 VOLT M.H. + 8" EXCEPT WHERE NOTED OTHERWISE.
○	JUNCTION BOX WITH STAINLESS STEEL COVER. SIZE AS REQUIRED BY CODE FOR NUMBER AND SIZE OF CONDUITS AND WIRES ENTERING AND LEAVING BOX. MINIMUM SIZE: 4" SQUARE
○	THERMOSTAT OUTLET SEE MECHANICAL DRAWINGS FOR EXACT LOCATION.
○	CLOCK OUTLET M.H. + 7 1/2" EXCEPT WHERE NOTED OTHERWISE.
○	SINGLE POLE SWITCH CONTROLLING OUTLET "A". M.H. + 4" EXCEPT WHERE NOTED
○	TWO POLE SWITCH. M.H. + 4"
○	THREE WAY SWITCH. M.H. + 4"
○	KEY OPERATED SWITCH. M.H. + 4"
○	SWITCH WITH PILOT LIGHT. M.H. + 4"
○	MANUAL MOTOR STARTER. FLUSH WALL MOUNTED. M.H. + 4"
○	RELAY. SIZE AND TYPE AS INDICATED ON MECHANICAL DRAWINGS
○	MAGNETIC MOTOR STARTER. SIZE "C"
○	FUSES DISCONNECT SWITCH: 225 AMP FRAME 150 AMP FUSE; 3 POLE PLUS SOLID NEUTRAL
○	CIRCUIT BREAKER: 225 AMP FRAME 150 AMP TRIP; 3 POLE PLUS SOLID NEUTRAL
○	CONDUIT ONLY #12 NYLON COND. ENTIRE LENGTH OF CONDUIT
○	WEATHER PRG
○	MOUNTING HEIGHT FROM FINISHED FLOOR TO CENTER OF OUTLET. LIGHTING FIXTURES FROM FINISHED FLOOR, STEP OR LANDING, TO BOTTOM OF FIXTURE.

FIXTURE SCHEDULE

SYMBOL	MANUFACTURER	LAMP	WATTS	MOUNTING	REMARKS
A	LITHONIA # 8TLB 40A	FLUORESC	4-40	CEILING RECESSED	ACRYLIC PLASTIC WRAP AROUND RECEPTACLE
B	# 8TCD 40A		2-40		
C	# 8TCD 40A		4-40		
D	# 8TLB 40A		4-40		
E	MANNING CO # AC 904	INCANDESC.	3-200	PAC 90	ADJUSTABLE WITH LONESTAR DIMMER BINS
F	PERFECTITE # HH-73		2-100		OPAL SQUARE PRISM
G	# HH-21		2-100		OPAL PRISM
H	MARCO # GA17		150		SQUARE WALL WASH-LIGHT
I	PERFECTITE # 401		2-75	WALL-SURF. M.H. + 7 1/2"	OPAL OCTAGONAL LIGHT-FOUR
J	# NB-10		2-60	WALL-SURF. USE MIRROR	18" BENT GLASS CHANNEL
K	# CP-20		150	CEILING SURFACE	OPAL DIFFUSER
L	# WSP-24		100	WALL-SURF. M.H. + 6"	OPAL DIFFUSER
M	# 1800		60	CEILING SURFACE	OPAL PRISM
N	ALABAX # 7140		60		PORCELAIN SOCKET
O	MARCO PARI-T271 J		150	CEILING RECESSED	ADJUSTABLE EYE BALL W/LOWERS
P	SHALDA # 7B9001		150	PAR 300FL GRADE	FURNISH COMPLETE WALL MOUNTING ACCESSORIES
Q	PERFECTITE # 8824-118				
R	MAGNALITE # W2640	FLUORESC	175	POLE	
S	MCPH LOGAN # 7AP-20118B-1570	MERCURY VAPOR	175	DELTA WHITE M.H. + 14"	
T	SHACDA # 7B9002	INCANDESC.	100 PAR 300FL	ON LOOP	ADJUST TO ILLUMINATE CROSS AND CENTER AS BEST AS POSSIBLE
U	PERFECTITE # 75222		271/2VDC/4E		UNIVERSAL WHITE STENCIL FACE LETTERS
V	# 75212				UNIVERSAL WHITE STENCIL FACE LETTERS WITH GREEN LETTERS

ALL FLUORESCENT FIXTURES SHALL BE FURNISHED WITH "B" LINE BALLASTS. IN ADDITION TO MANUFACTURERS LISTED ABOVE, FIXTURES OF EQUAL TYPE AND QUALITY MAY BE SUBMITTED BY SUNBEAM, PRUDENTIAL, SMOOT-HELMAN, NULITE, GLOBE, MARCO OR LIGHTOWER.

ELECTRICAL-SITE PLAN



POLE BASE DETAIL
SCALE NONE